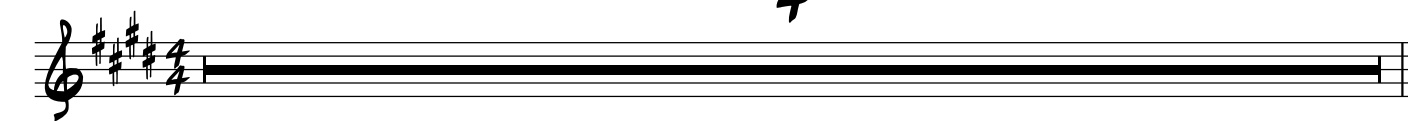


# - WHAT'S GOING ON -

Marvin Gaye

♩ = 100 (Easy Soul)

4

**A**

(1.) Moth-er, Moth-er;

There's too man-y of you cry - in'



(2.) Fath-er, Fath er;

We don't need to

es-cal- ate

You see



Both-er, Broth-er, Broth - er;

There's far too man-y of you die - in'



war is not the an - swer

for on - ly love

can con-quer

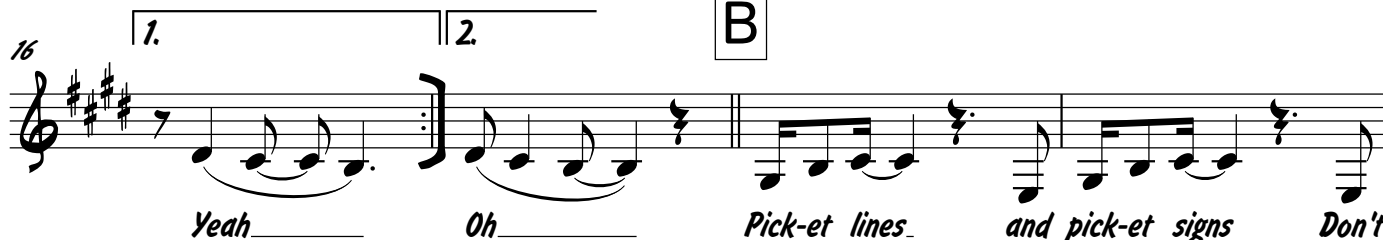
hate

12 (Harmony 2nd X Only)



You know we've got to find the way

to bring some lov-in' here to-day



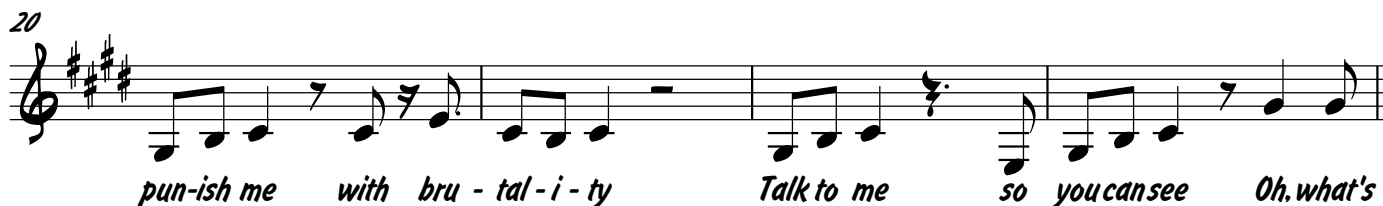
Yeah

Oh

Pick-et lines

and pick-et signs

Don't



pun-ish me

with bru - tal - i - ty

Talk to me

so you can see

Oh, what's

**B**

24 C

go-in' on \_\_\_\_\_ What's go-in' on \_\_\_\_\_ Yeah, what's go-in' on \_\_\_\_\_ Ah, what's

(Adlib)

27 D

go-in' on \_\_\_\_\_ Ah. na ha \_\_\_\_\_ ha ha \_\_\_\_\_

30

Ay \_\_\_\_\_ ya ya ya \_\_\_\_\_ ya ya ya \_\_\_\_\_ ya ya \_\_\_\_\_ ya ya \_\_\_\_\_ ya

33

Ah \_\_\_\_\_ ya ya ya ya ya ya ya ya ya ya ya ya

36

Be de bey oop Bip bip bey doop Bip bip bey doop Be de Bip bip bey doop Bi

39 E

bey fa fa fey \_\_\_\_\_ doop Moth - er, Moth - er; ev-ery bod - y

42

thinks we \_\_\_\_\_ went wrong Oh, but who are they \_\_\_\_\_ to judge us

45

sim-ply 'cause our hair is \_\_\_\_\_ long Ah. \_\_\_\_\_ You know we've

48

got to find a way **F** to bring some un - der - stan-ding here to day Oh.

51

Oh. Oh Pick-et lines and pick-et signs Don't

54

pun-ish me with bru - tal-i - ty Talk to me so you can see Ah. what's **G**

58

go-in'on Yeah. what's go-in'on Tell me what's go-in'on I'll tell you what's

61

go-in' on (Adlib) **H**

65

69

73

1. 2. What's go - in' on rit..

Background Vocals

# - WHAT'S GOING ON -

Marvin Gaye

♩ = 100 (Easy Soul)

4 A

Ah Ooh Ah Ah Ooh

1. 2.

11

Ah Ah Ah

18 B

Sis-ter Sis-ter Sis-ter Sis-ter Sis-ter

23 C

Sis - ter What's go - in' on What's go - in' on

26

What's go - in' on What's go - in' on

28 D (Background/Crowd Noises)

Background/Crowd Noises

32

36

40 **E**

Ah Ooh Ah Ah Ooh

46

Ah Ah Ah

52 **F**

Broth-er Broth-er Broth-er Broth-er Broth-er

57 **G**

Broth-er What's go-in'on What's go-in'on What's go-in'on

61 **H** (Background/Crowd Noises)

What's go-in'on

66

71

1. 2. rit. Ooh

Trumpet II

# - WHAT'S GOING ON -

Marvin Gaye

♩ = 100 (Easy Soul)

**4** **A** 2nd X Only

*pp*

**8**

*pp*

**13** **Both Xs** 1. 2.

*p cresc.*

**18** **B** (Unison)

*mp cresc.* *mf*

**24** **C**

*sfz*

**28** **D**

*mf*

**35**

*cresc.*

40 **E**

*mf*

46

*cresc.*

52 **F**

*mp cresc.* *mp cresc.* *sfz*

58 **G**

*mf cresc.*

62 **H**

*mf*

69

*cresc.*

73

*f* *fp* *rit.*

Trumpet I

# - WHAT'S GOING ON -

Marvin Gaye

♩ = 100 (Easy Soul)

4 **A** 2nd X Only

8

13 **Both Xs** 1. 2.

18 **B** (Unison)

24 **C**

28 **D**

35

*pp*

*p cresc.*

*mp cresc.*

*mf*

*sfz*

*cresc.*



40 **E**

*mf*

46

*cresc.* *mf*

52 **F**

*mf*

56 **G**

*mp cresc.* *sfz* *mf cresc.*

62 **H**

*mf*

69

*cresc.*

73

*f* *fp* *rit..*

*Trombone*

# - WHAT'S GOING ON -

Marvin Gaye

♩ = 100 (Easy Soul)

**4** **A** 2nd X Only

*pp*

**8**

*pp*

**13** **Both Xs**

*p cresc.*

**18** **B**

*mp cresc.*

*(Unison)*

*mf*

**24** **C**

*sfz*

**28** **D**

*mf*

**34**

*cresc.*

40 **E**

*mf* *cresc.*

47

*mf* *cresc.*

52 **F**

*mp cresc.* *mp cresc.* *sfz*

58 **G**

*mf cresc.*

62 **H**

*mf*

69

*cresc.*

73

*f* *fp* *rit.*

Tenor Sax (& Opt Soprano)

# - WHAT'S GOING ON -

Marvin Gaye

♩ = 100 (Easy Soul)

**Soprano Saxophone**

(For Tenor: Play 8vb)

(Solo)

*f*

To Ten. Sax.

**A**

2nd X Only

*pp*

*pp*

13

Both Xs

*p cresc.*

1. 2.

18

**B**

(Unison)

*mp cresc.*

*mf*

24

**C**

*sfz*

28

**D**

*mf*

35

*cresc.*

40 **E**

*mf* *cresc.*

47

*mf* *cresc.*

52 **F**

*mp cresc.* *mp cresc.* *sfz*

58 **G**

*mf cresc.*

62 **H**

*mf* *cresc.*

69

*cresc.*

73

1. 2.

*f* *fp* *rit..*

## - WHAT'S GOING ON -

♩ = 100 (Easy Soul)

**4 = 100 (Easy Soul)**

**4**

**A** **2nd X Only**

*pp*

**8**

*pp*

**13** **Both Xs**

*p cresc.*

**18** **B**

*mp cresc.*

**24** **C**

*mf*

**28** **D**

*mf*

**35**

*cresc.*

40 **E**

*mf* *cresc.*

49 **F**

*mp cresc.*

54

*mp cresc.* *sfz*

58 **G**

*mf cresc.*

62 **H**

*mf*

69

*cresc.*

73

*f* *fp* *rit.*

Alto Saxophone

# - WHAT'S GOING ON -

Marvin Gaye

♩ = 100 (Easy Soul)

4 **A** 2nd X Only

8

13 **Both Xs** 1. 2.

18 **B** (Unison)

24 **C** sfz

28 **D** mf

35 cresc.



40 **E**

*mf* *cresc.*

47

52 **F**

*mp cresc.* *mp cresc.* *sfz*

58 **G**

*mf cresc.*

62 **H**

*mf*

69

*cresc.*

73

*rit.* *f* *fp*

Piano or Rhodes

# - WHAT'S GOING ON -

Marvin Gaye

♩ = 100 (Easy Soul)

Sheet music for Piano or Rhodes, featuring chords and melodic lines across multiple staves.

**Staff 1:** E<sup>MAJ</sup>7

**Staff 2:** *f* [A] E<sup>MAJ</sup>7 C<sup>#</sup>m7 E<sup>MAJ</sup>7 *mf* *sim....*

**Staff 3:** C<sup>#</sup>m7 F<sup>#</sup>m7 B<sup>9</sup>(SUS) B<sup>13</sup> 1.

**Staff 4:** 2. B<sup>13</sup> [B] F<sup>#</sup>m7 B<sup>9</sup>(SUS) F<sup>#</sup>m7 B<sup>9</sup>(SUS) F<sup>#</sup>m7 B<sup>9</sup>(SUS) B<sup>13</sup> *cresc.*

**Staff 5:** [C] E<sup>MAJ</sup>7 C<sup>#</sup>m7 E<sup>MAJ</sup>7 C<sup>#</sup>m7

**Staff 6:** *f* [D] A<sup>m</sup>9

**Staff 7:** 34 (Comp in L.H.) A<sup>MAJ</sup>7/B A/B B<sup>13</sup> *cresc.*

**Staff 8:** 40 [E] E<sup>MAJ</sup>7 C<sup>#</sup>m7 E<sup>MAJ</sup>7 *mf*

46  $C\sharp m7$   $F\sharp m7$   $B^9(SUS)$   $B^{13}$

52 **F**  $F\sharp m7$   $B^9(SUS)$   $F\sharp m7$   $B^9(SUS)$   $F\sharp m7$   $B^9(SUS)$   $B^{13}$

*cresc.*

58 **G**  $E^{maj7}$   $C\sharp m7$   $E^{maj7}$   $C\sharp m7$

*f*

62 **H**  $A m^9$

68 *(Comp in L.H.)*  $A^{maj7}/B$   $A/B$   $B^{13}$

74  $B^{13}$   $E^{maj9}$

*rit...*

*f* *fp*

# - WHAT'S GOING ON -

♩ = 100 (Easy Soul)

5 **A** E<sup>MAJ7</sup> C<sup>#m7</sup> E<sup>MAJ7</sup> *f* *sim...*

10 C<sup>#m7</sup> F<sup>#m7</sup> B<sup>9(SUS)</sup> *mf*

16 1. B<sup>13</sup> 2. B<sup>13</sup> **B** F<sup>#m7</sup> B<sup>9(SUS)</sup> *cresc.* *sim...*

20 F<sup>#m7</sup> B<sup>9(SUS)</sup> F<sup>#m7</sup> B<sup>9(SUS)</sup> B<sup>13</sup>

24 **C** E<sup>MAJ7</sup> C<sup>#m7</sup> E<sup>MAJ7</sup> C<sup>#m7</sup>

28 **D** A<sup>m9</sup> *f* *sim...*

31

36 A<sup>MAJ7</sup>/B A/B B<sup>13</sup> *cresc.*

40 **E** E<sup>ma</sup>7 C<sup>#</sup>m7

*mf* *sim...*

44 E<sup>ma</sup>7 C<sup>#</sup>m7 F<sup>#</sup>m7

50 B<sup>9</sup>(SUS) B<sup>13</sup> **F** F<sup>#</sup>m7 B<sup>9</sup>(SUS)

*cresc.* *sim...*

54 F<sup>#</sup>m7 B<sup>9</sup>(SUS) F<sup>#</sup>m7 B<sup>9</sup>(SUS) B<sup>13</sup>

58 **G** E<sup>ma</sup>7 C<sup>#</sup>m7 E<sup>ma</sup>7 C<sup>#</sup>m7

*f*

62 **H** A<sup>m</sup>9

*sim...*

66 A<sup>ma</sup>7/B

71 A/B 1. B<sup>13</sup> 2. B<sup>13</sup> E<sup>ma</sup>9

*rit.* *f* *fp*

A guitar score for the song 'What's Going On'. The score is written in treble clef with a key signature of three sharps (F#, C#, G#). It consists of seven staves of music. The first staff (measures 40-43) starts with a box labeled 'E' and contains a melodic line with eighth notes and a half note, followed by a whole note. The second staff (measures 44-49) contains a series of slurs. The third staff (measures 50-53) starts with a box labeled 'F' and contains a melodic line with eighth notes and a half note, followed by a whole note. The fourth staff (measures 54-57) contains a series of slurs. The fifth staff (measures 58-61) starts with a box labeled 'G' and contains a melodic line with eighth notes and a half note, followed by a whole note. The sixth staff (measures 62-65) starts with a box labeled 'H' and contains a melodic line with eighth notes and a half note, followed by a whole note. The seventh staff (measures 66-71) contains a series of slurs and a final melodic line with eighth notes and a half note, followed by a whole note. The score includes various guitar-specific markings such as 'mf', 'sim...', 'cresc.', 'f', 'fp', and 'rit.'.

## Drums

# - WHAT'S GOING ON -

Marvin Gaye

♩ = 100 (Easy Soul)

Drum score for "What's Going On" by Marvin Gaye. The score is written for a drum set in 4/4 time, with a tempo of 100 (Easy Soul). The score is divided into sections A, B, C, and D, with measures 1 through 36. The score includes repeat signs, fill marks, and crescendo/decrescendo hairpins.

**Section A (Measures 5-15):** Starts with a snare drum pattern (x) and a bass drum pattern (x). The pattern repeats for 4 measures, then for 6 measures, then for 8 measures, and finally for 10 measures. The dynamic marking is *f* (forte) and the pattern is marked *sim...* (simultaneous).

**Section B (Measures 16-23):** Starts with a snare drum pattern (x) and a bass drum pattern (x). The pattern repeats for 4 measures, then for 6 measures, and finally for 8 measures. The dynamic marking is *cresc.* (crescendo) and the pattern is marked *sim...* (simultaneous).

**Section C (Measures 24-31):** Starts with a snare drum pattern (x) and a bass drum pattern (x). The pattern repeats for 4 measures, then for 6 measures, and finally for 8 measures. The dynamic marking is *f* (forte) and the pattern is marked *sim...* (simultaneous).

**Section D (Measures 32-36):** Starts with a snare drum pattern (x) and a bass drum pattern (x). The pattern repeats for 4 measures, then for 6 measures, and finally for 8 measures. The dynamic marking is *sim..* (simultaneous).

The score includes various drum patterns, including snare, hi-hat, and kick, with dynamic markings like *f*, *mf*, and *cresc.* The score is divided into sections A, B, C, and D, with measures 1 through 36. The score includes repeat signs, fill marks, and crescendo/decrescendo hairpins.

40 **E** *mf* *sim...* (4)

45 (6) (8) (10)

51 *Fill* **F** *cresc.* *sim...*

54 (4) (6)

58 **G** *f* *sim...* (4) *Fill*

62 **H** *sim..* (4)

66 (6) (8)

71 (10) *1.* *Fill* *2.* *Fill* *f* *fp* *rit.*

## Bass

# - WHAT'S GOING ON -

Marvin Gaye

♩ = 100 (Easy Soul)

Sheet music for Bass, featuring measures 1 through 24. The key signature is E major (three sharps: F#, C#, G#) and the time signature is 4/4. The tempo is marked as ♩ = 100 (Easy Soul).

Measures 1-4: E<sup>MAJ</sup>7, *f*

Measures 5-8: A (Section A), E<sup>MAJ</sup>7, C<sup>#</sup>m7, *mf*

Measures 9-12: E<sup>MAJ</sup>7, C<sup>#</sup>m7

Measures 13-15: F<sup>#</sup>m7, B<sup>9</sup>(SUS)

Measures 16-17: 1. B<sup>13</sup>, 2. B<sup>13</sup>

Measures 18-20: B (Section B), F<sup>#</sup>m7, B<sup>9</sup>(SUS), F<sup>#</sup>m7, *cresc.*

Measures 21-23: B<sup>9</sup>(SUS), F<sup>#</sup>m7, B<sup>9</sup>(SUS), B<sup>13</sup>

Measures 24: C (Section C), E<sup>MAJ</sup>7, C<sup>#</sup>m7, E<sup>MAJ</sup>7, *f*



27  $C\sharp m7$   $D$   $A m9$

30

33

36  $A m\sharp 7/B$   $A/B$

39  $B^{13}$   $E$   $E m\sharp 7$  *cresc.* *mf*

42  $C\sharp m7$   $E m\sharp 7$

46  $C\sharp m7$   $F\sharp m7$

49  $B^9(SUS)$   $B^{13}$

52  $F$   $F\sharp m7$   $B^9(SUS)$   $F\sharp m7$  *cresc.*

The image shows a bass line musical score for the song 'WHAT'S GOING ON'. The score is written on a single staff in bass clef with a key signature of three sharps (F#, C#, G#). The music is divided into measures, with measure numbers 27, 30, 33, 36, 39, 42, 46, 49, and 52 marked at the beginning of their respective lines. Chord symbols are placed above the staff: C#m7, D, Am9, A m#7/B, A/B, B13, E, E m#7, C#m7, E m#7, C#m7, F#m7, B9(SUS), B13, F, F#m7, B9(SUS), and F#m7. Dynamic markings include 'cresc.' (crescendo) and 'mf' (mezzo-forte). The notation includes various rhythmic values such as eighth, quarter, and half notes, as well as rests and ties. There are also some performance markings like 'mf' and 'cresc.'.

55 B9(SUS) F#m7 B9(SUS) B13

58 **G** EmaJ7 C#m7 EmaJ7

*f*

61 C#m7 **H** Am9

64

67

70 Amaj7/B A/B

73 1. B13 2. B13 EmaJ9

*rit.* *f* *fp*