

Respect

♩ = 115 (Soul - Straight ♩'s)

4



A



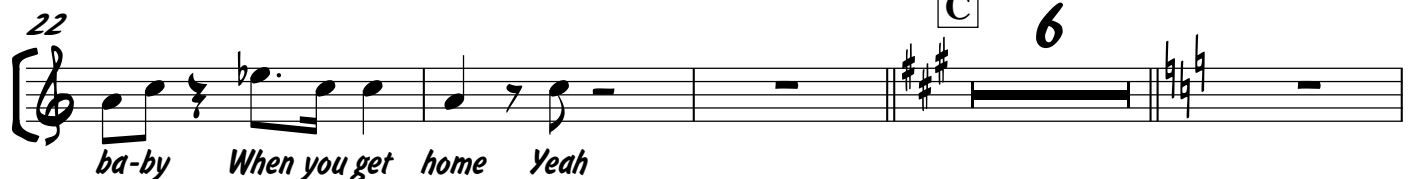
B



(Sax Solo)

C

6



2
32

D

Voice



43

E



46

F



50



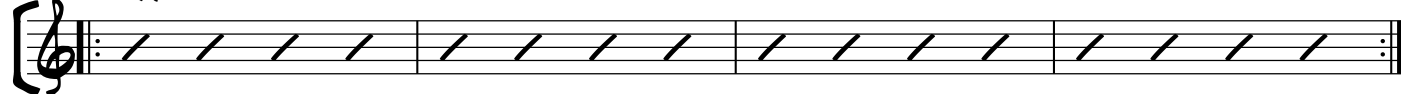
53



55

G

Adlib



59

2.

H

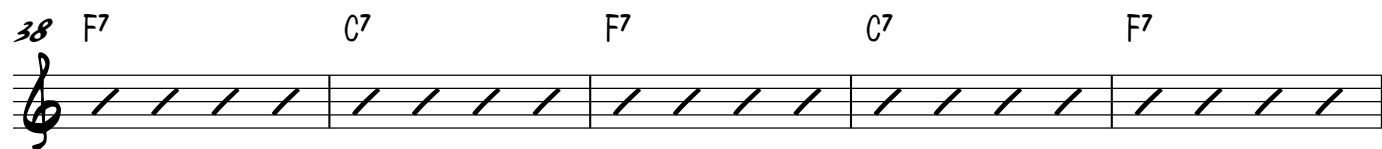
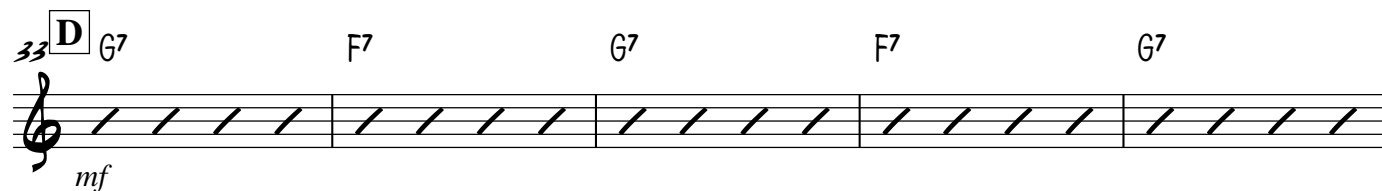
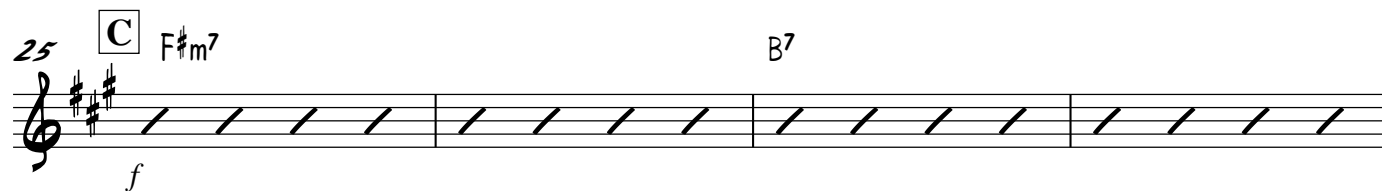
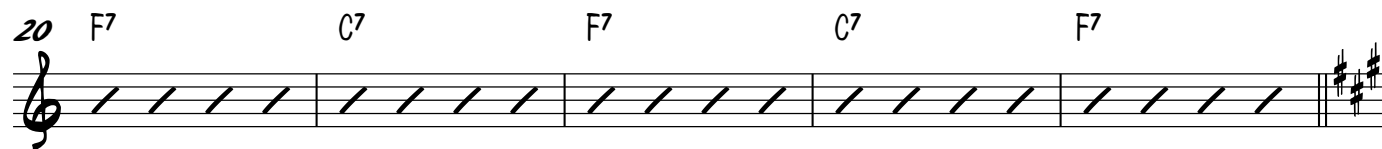
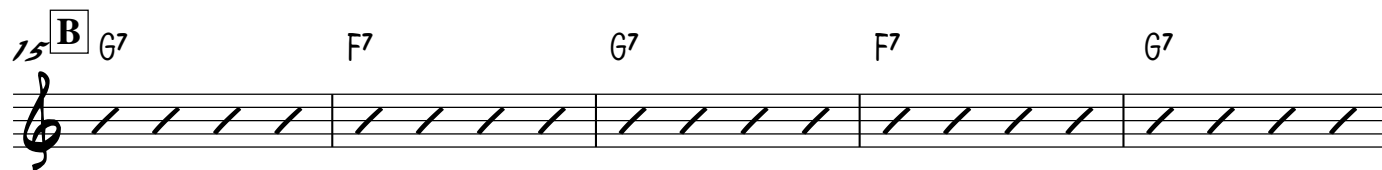
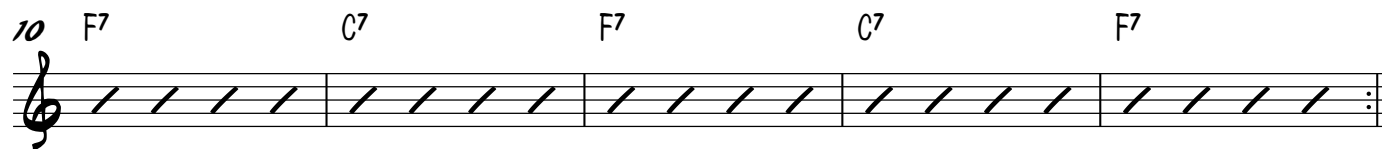
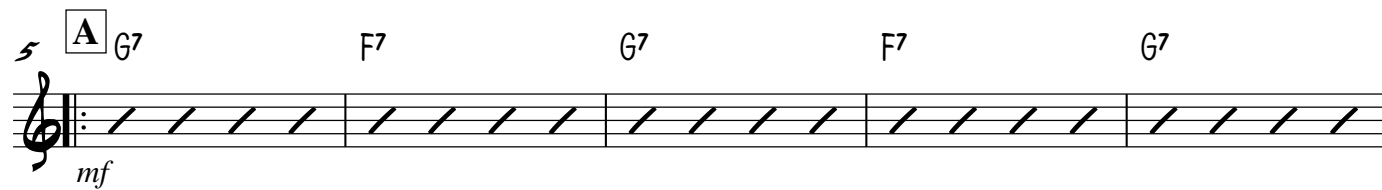
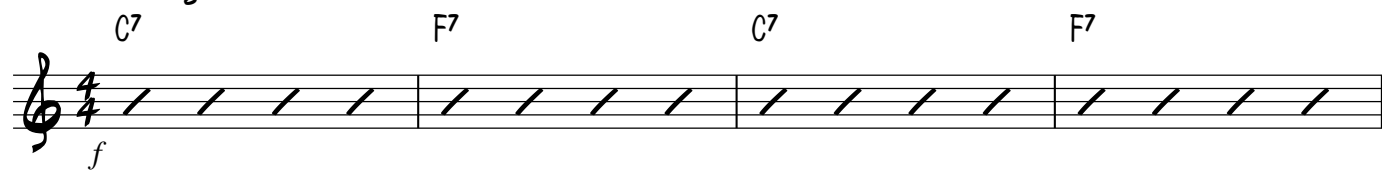


Piano

Respect

aretha franklin

♩ = 115 (Soul - Straight 8's)



2 **E** C⁷ E F⁷ B⁷ C⁷ E F⁷ B⁷

Piano

f *ff*

47 **F** C⁷ F⁷ C⁷ F⁷

f

51 C⁷ F⁷ C⁷ F⁷

55 **G** C⁷ F⁷ C⁷ 1. F⁷

59 2. F⁷ **H** F G⁹(#5) B⁷ C⁷

ff

Bass

Respect

aretha franklin

 = 115 (Soul - Straight 8's)

Sheet music for Bass (Bass Clef, 4/4 time) for the song "Respect" by Aretha Franklin. The tempo is 115 (Soul - Straight 8's).

The music is divided into sections marked A, B, and C. Chord symbols (F7, C7, G7, F#m7, B7) are indicated above the staff.

Section A (Measures 5-11):

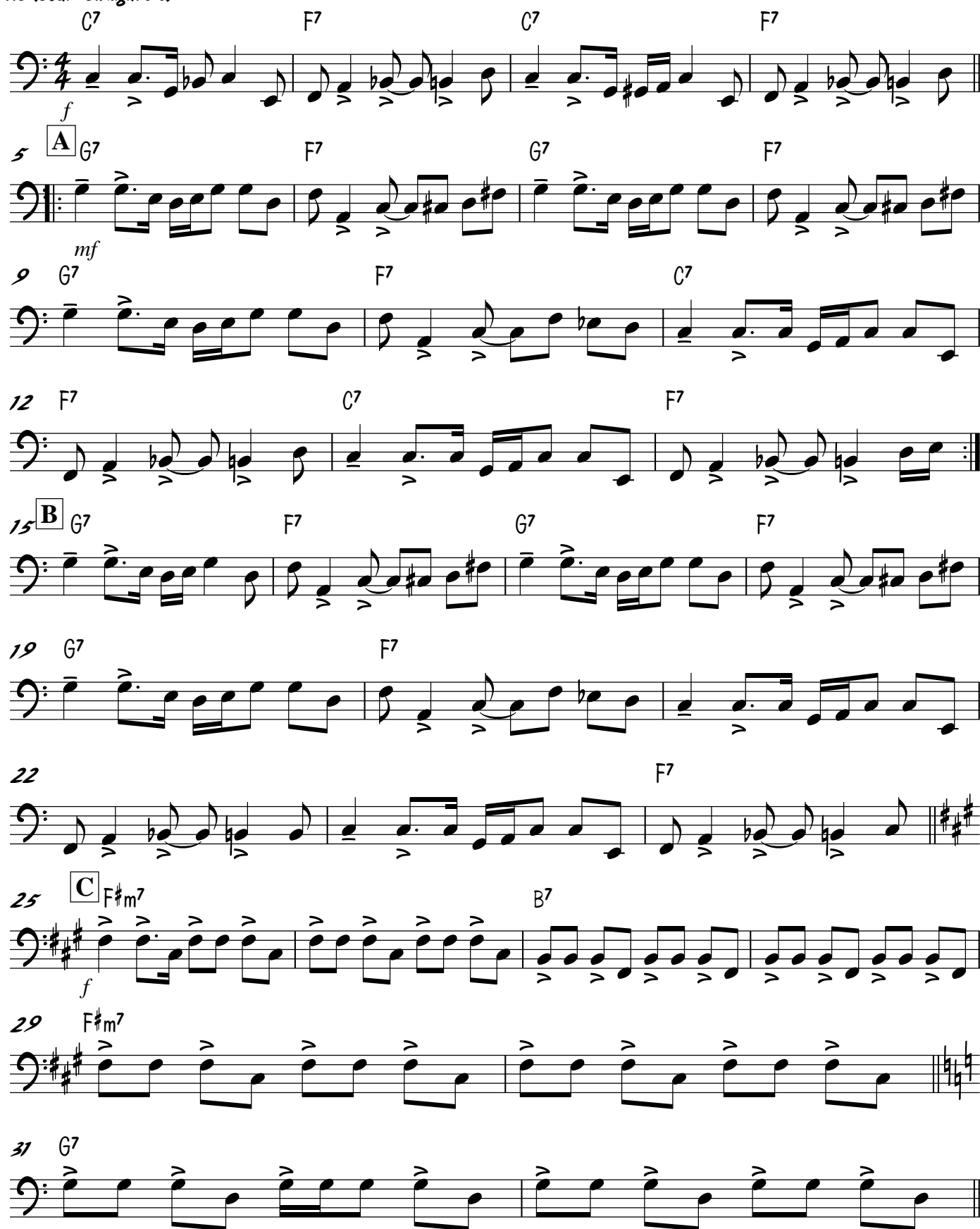
- Measure 5: **f** (forte), C7
- Measure 6: F7
- Measure 7: C7
- Measure 8: F7
- Measure 9: **f** (forte), A
- Measure 10: F7
- Measure 11: G7

Section B (Measures 15-18):

- Measure 15: **B** (B-flat), G7
- Measure 16: F7
- Measure 17: G7
- Measure 18: F7

Section C (Measures 25-31):

- Measure 25: **C** (C-sharp), F#m7
- Measure 26: B7
- Measure 27: **f** (forte), F#m7
- Measure 28: F#m7
- Measure 29: F#m7
- Measure 30: F#m7
- Measure 31: G7



2 **D** ³³ ^{G7} Bass ^{F7} ^{G7} ^{F7}

mf

37 ^{G7} ^{F7} ^{C7}

40 ^{F7} ^{C7} ^{F7}

43 **E** ^{C7} ^E ^{F7} ^{B7} ^{C7} ^E ^{F7} ^{B7}

f *ff*

47 **F** ^{C7} ^{F7} ^{C7} ^{F7}

f

51 ^{C7} ^{F7} ^{C7} ^{F7}

55 **G** ^{C7} ^{F7} ^{C7} ^{1. F7}

59 ^{2. F7} **H** ^F ^{G9(#5)} ^{B7} ^{C7}

ff

Detailed description: This is a bass line musical score in 4/4 time. It consists of eight staves of music. The first staff starts at measure 33 with a **D** chord and ^{G7} supradirection. The second staff starts at measure 37 with ^{G7}, ^{F7}, and ^{C7} chords. The third staff starts at measure 40 with ^{F7}, ^{C7}, and ^{F7} chords. The fourth staff starts at measure 43 with a boxed **E** chord and a series of chords: ^{C7}, ^E, ^{F7}, ^{B7}, ^{C7}, ^E, ^{F7}, and ^{B7}. The fifth staff starts at measure 47 with a boxed **F** chord and ^{C7}, ^{F7}, ^{C7}, and ^{F7} chords. The sixth staff starts at measure 51 with ^{C7}, ^{F7}, ^{C7}, and ^{F7} chords. The seventh staff starts at measure 55 with a boxed **G** chord and ^{C7}, ^{F7}, ^{C7}, and a first ending bracket over ^{F7}. The eighth staff starts at measure 59 with a second ending bracket over ^{F7}, followed by a boxed **H** chord and ^F, ^{G9(#5)}, ^{B7}, and ^{C7} chords. Dynamics include *mf*, *f*, *ff*, and *ff* at the end.

Respect

aretha franklin

Solo C⁷ F⁷ C⁷ F⁷

A G⁷ F⁷ G⁷ F⁷ G⁷

B G⁷ F⁷ G⁷ F⁷ G⁷

C F^{#m7} B⁷

D G⁷ F⁷ G⁷ F⁷ G⁷

E C⁷ E F⁷ B⁷ C⁷ E F⁷ B⁷

f *mf* *sim...* *ff*

2 **47** **F** C⁷ F⁷ C⁷ F⁷ Guitar

f

51 C⁷ F⁷ C⁷ F⁷

55 **G** C⁷ F⁷ C⁷ 1. F⁷

59 2. F⁷ **H** F [^] G⁹(#5) [^] [^] B⁷ C⁷

ff

Drums

Respect

aretha franklin

♩ = 115 (Soul - Straight ♩'s)

Drum score for "Respect" by Aretha Franklin. The score is in 4/4 time with a tempo of 115 bpm. It features various drum patterns, including snare, hi-hat, and bass drum, with dynamic markings like *f*, *mf*, and *sim...* (simile). The score is divided into sections A, B, and C, with measures numbered 1 through 29. Section A starts at measure 5, Section B at measure 15, and Section C at measure 25. The score ends with a fill in measure 29.

Measures 1-4: *f* (4 measures)

Measures 5-8: Section A (4 measures), *mf*, *sim...*

Measures 9-14: (6 measures), (8 measures), (10 measures)

Measures 15-18: Section B (4 measures), *sim...*

Measures 19-24: (6 measures), (8 measures), (10 measures)

Measures 25-28: Section C (4 measures), *f*, *sim...*

Measures 29: Fill (8 measures)

2 33 **D** Drums

mf *sim...* (4)

37 (6) (8)

42 (10) Fill **E** *f* *ff* Fill

47 **F** *f* *sim...* (4)

51 (6) (8)

55 **G** *sim...* 1.

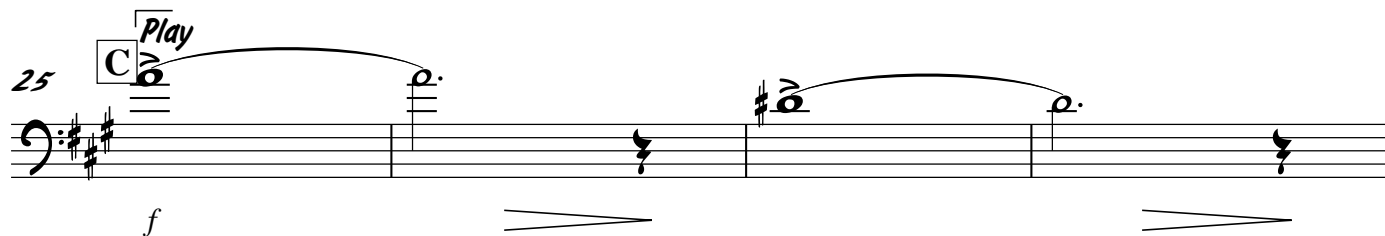
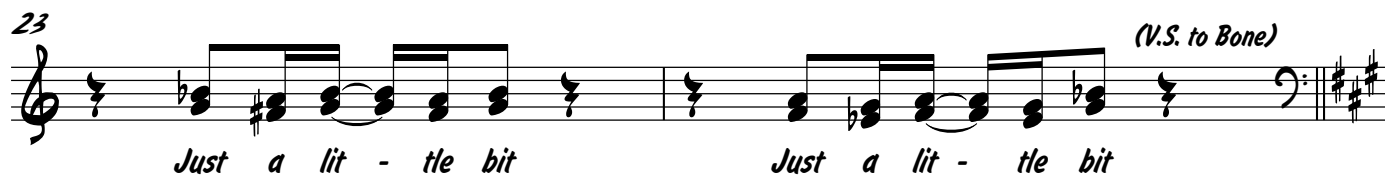
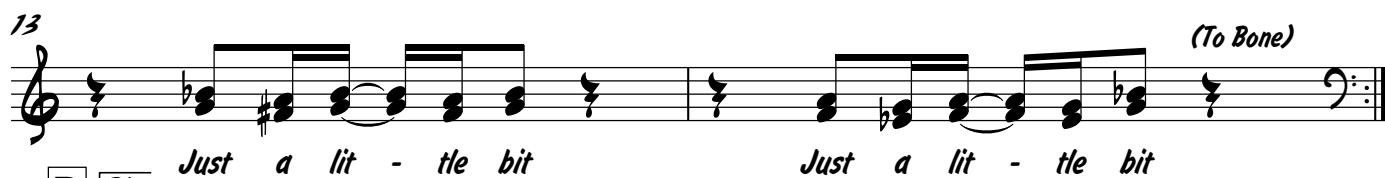
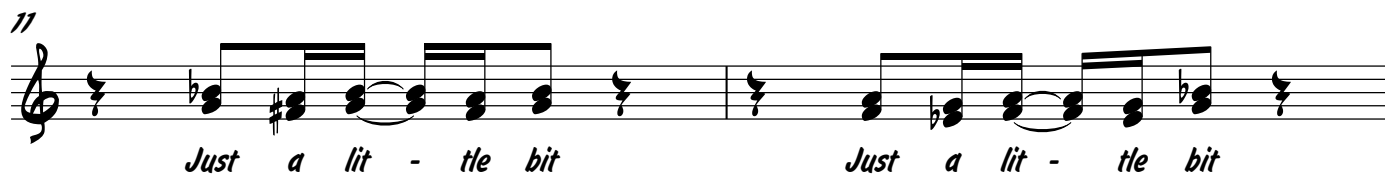
59 2. **H** *ff* 3

Trombone

Respect

aretha franklin

♩ = 115 (Soul - Straight ♯'s)



2 ³³ **D** Sing

Trombone

Ooh Ooh Ooh Ooh Ooh Ooh

³⁹ (V.S. to Bone)

Re - re - re - re - re - re - re - re - spect Just a lit - tle bit Just a lit - tle bit

⁴³ **E** Play

f *ff*

⁴⁷ **F** Sing

Sock it to me, sock it to me, sock it to me, sock it to me, sock it to me, sock it to me, sock it to me, sock it to me

⁴⁹

Just a lit - tle bit Just a lit - tle bit Just a lit - tle bit Just a lit - tle bit

⁵³ **G**

Just a lit - tle bit Just a lit - tle bit Re - re - re - re - re - re - re - re -

⁵⁷ 1. 2. (V.S. to Bone)

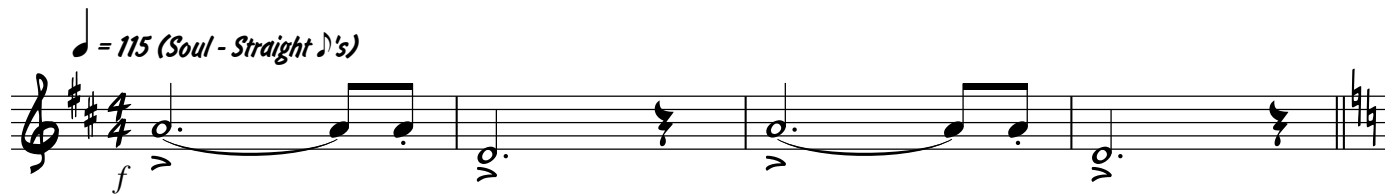
spect Just a lit - tle bit Just a lit - tle bit Just a lit - tle bit

⁶⁰ **H** Play

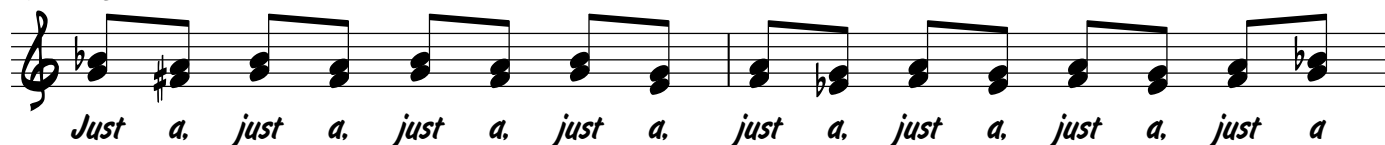
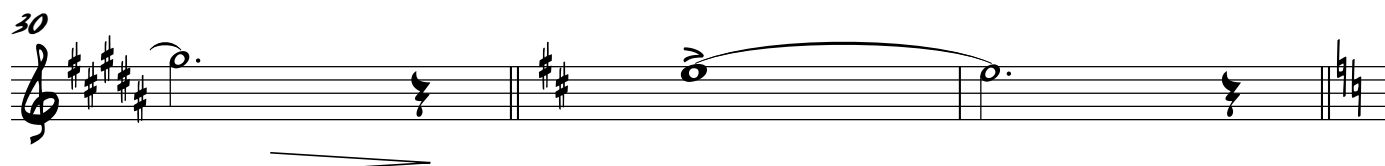
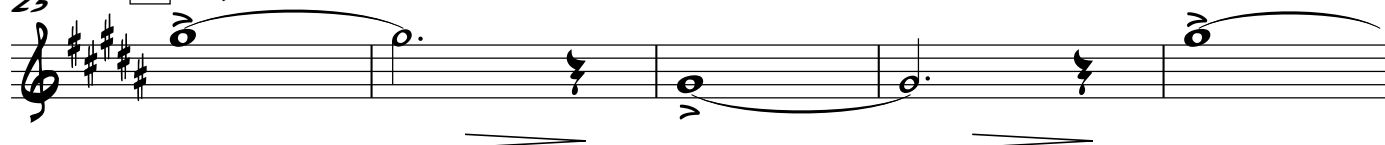
ff

Respect

aretha franklin

 $\text{♩} = 115$ (Soul - Straight ♩ 's)5 **A** Sing15 **B** Play

21 Sing

25 **C** Play33 **D** Sing

2 ³⁹ Trumpet in B \flat (To Tmpt.)

Re - re - re - re - re - re - re - re - spect Just a lit - tle bit Just a lit - tle bit

43 **E** Play

f *ff*

Just a lit - tle bit

47 **F** Sing

Sock it to me, sock it to me, sock it to me, sock it to me, sock it to me, sock it to me, sock it to me, sock it to me

49

Just a lit - tle bit Just a lit - tle bit Just a lit - tle bit Just a lit - tle bit

53 **G**

Just a lit - tle bit Just a lit - tle bit Re - re - re - re - re - re - re - re -

57 1. 2. (V.S. to Tmpt.!)

spect Just a lit - tle bit Just a lit - tle bit Just a lit - tle bit

60 **H** Play

ff

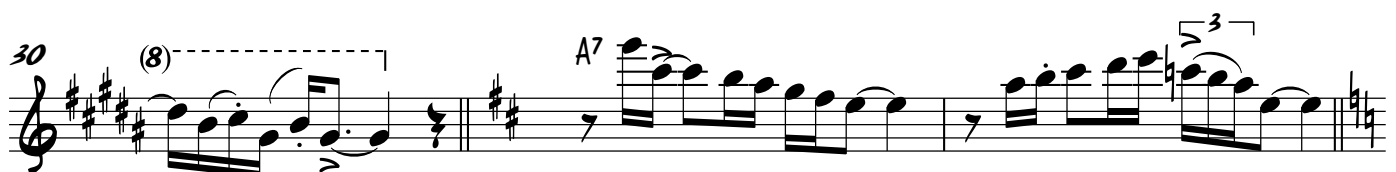
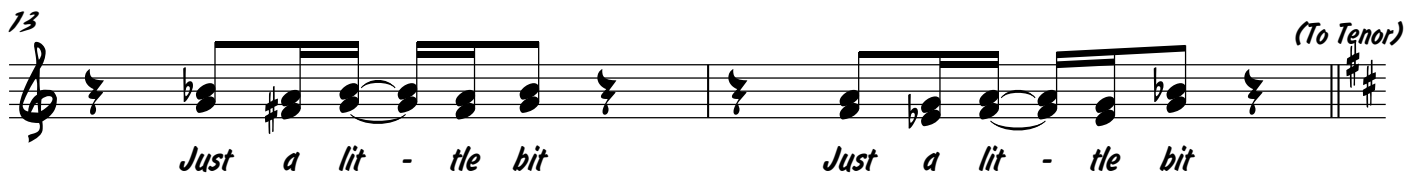
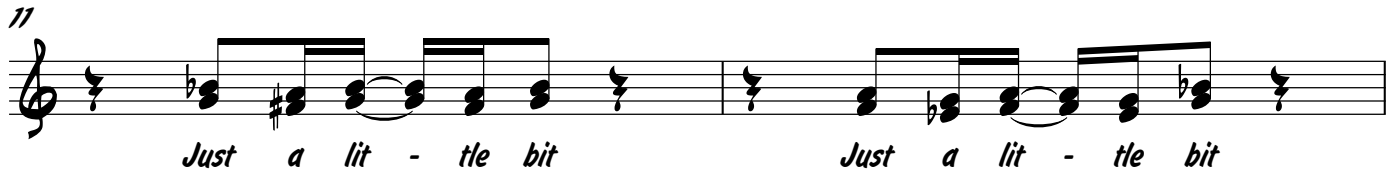
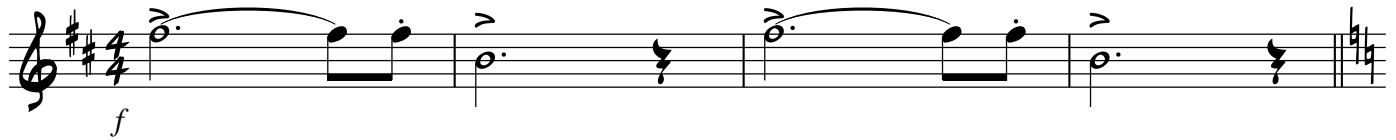
Just a lit - tle bit

Tenor Saxophone

Respect

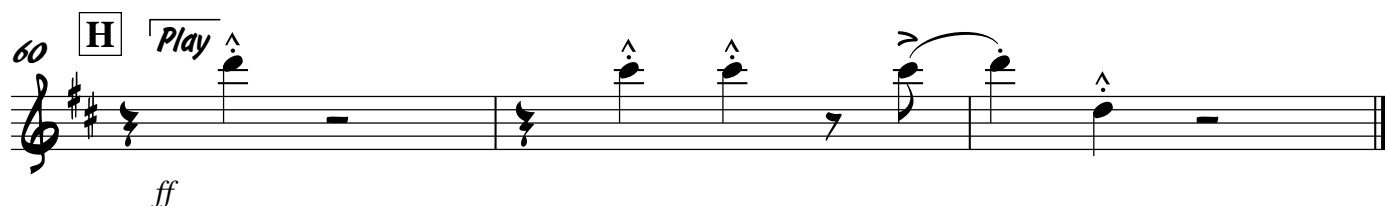
aretha franklin

♩ = 115 (Soul - Straight 8's)



2 D Sing

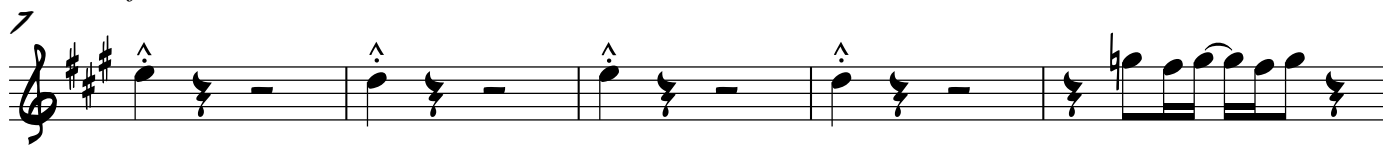
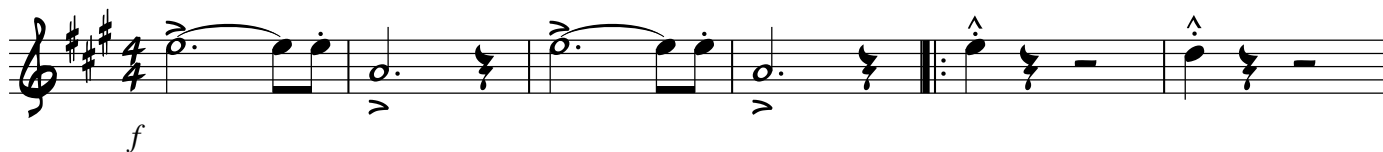
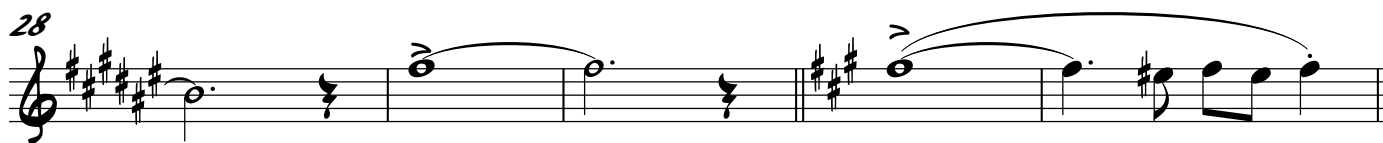
Tenor Saxophone



Respect

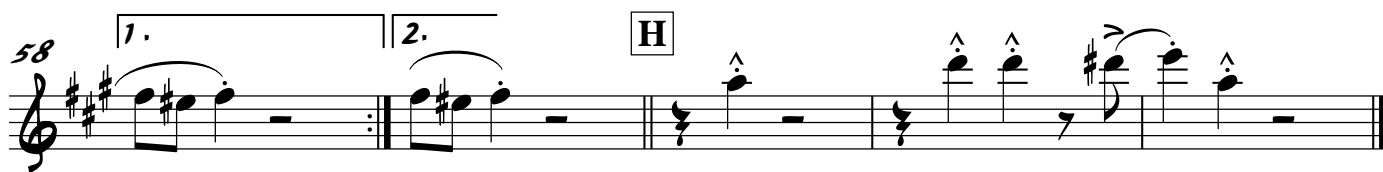
aretha franklin

♩ = 115 (Soul - Straight 8's)

A**B****C****D****E**

ff

2 47 **F** Alto Saxophone



ff