

Signed, Sealed, Delivered

Stevie Wonder

♩ = 110 (Soul)

4

A

Like a fool I went and stayed too long
 Seen a lot of things in this 'ole world

Now I'm won - derin' if your love's still strong Ooh. ba -

When I touched them they did noth - ing. girl Ooh ba

by Here I am Signed, sealed, del-iv-ered I'm yours

B

13

Then that time I went and said 'good - bye'

Oo - wee babe. you set my thing on fire That's

15

Now I'm back and not ash-amed to cry Ooh. ba -

why I know you're my one and on - ly des - ire Ooh. ba

17

by Here I am Signed, sealed, de-liv-ered I'm yours Here I am

21 C

ba - by Oh Got the fut-ture in your hand Here I am

25

ba - by Oh Got the fu-ture in your hand

28

I've done a - lot of fool - ish things that I real-ly did-n't mean

30 1.

Hey, yeah Did-n't I Whoa, ba - by

33 2. (Adlib)

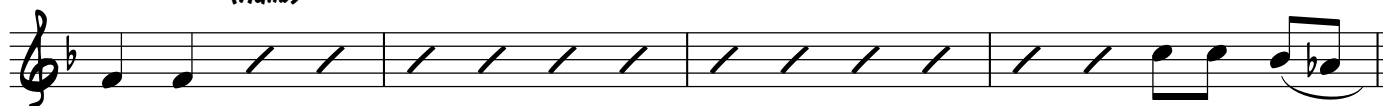
I could be a bro - kenman Here I am

36 **D**



ba - by Ah__ Here I am__ ba - by Oh__ Here I am.__

40 (Adlib)



ba - by Sea-led. signed_

44 **E** Heavy Swing!



Sealed del-iv - ered__ I'm yours__ Yeah

Signed, Sealed, Delivered

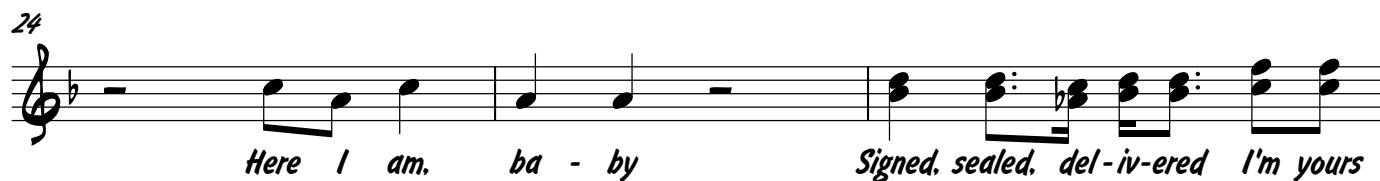
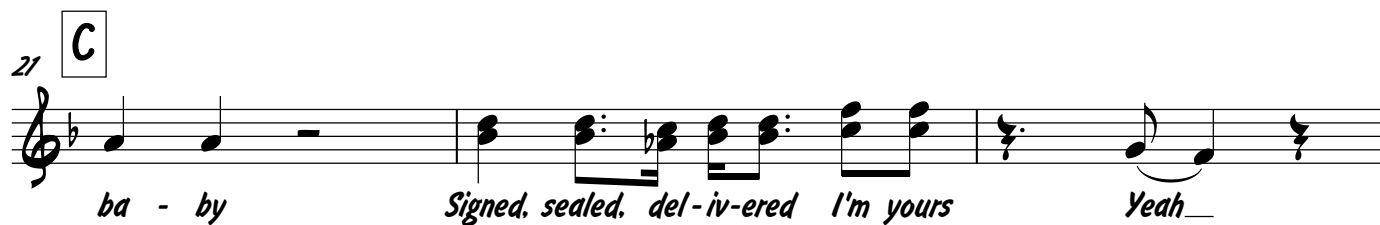
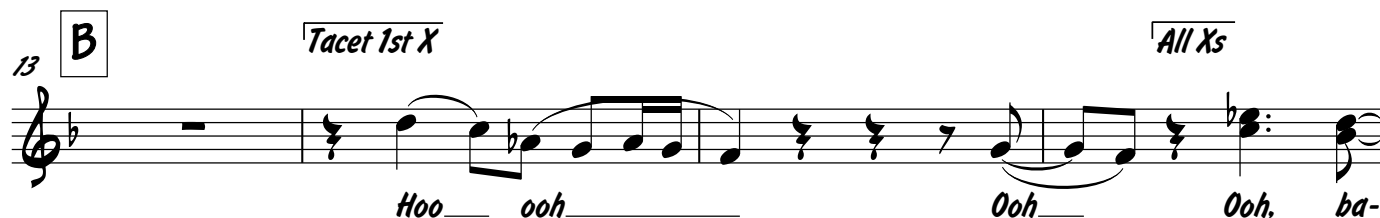
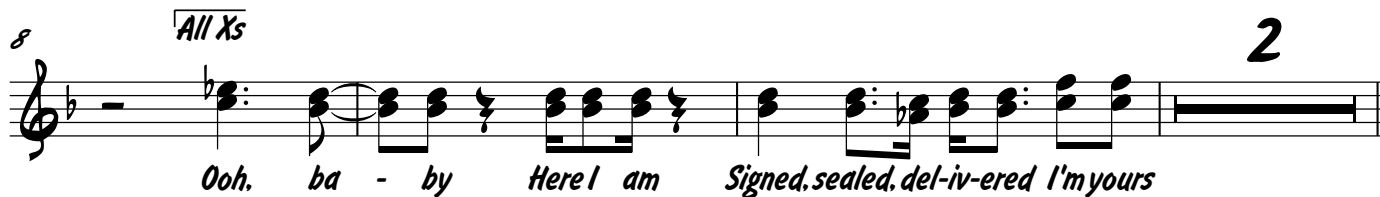
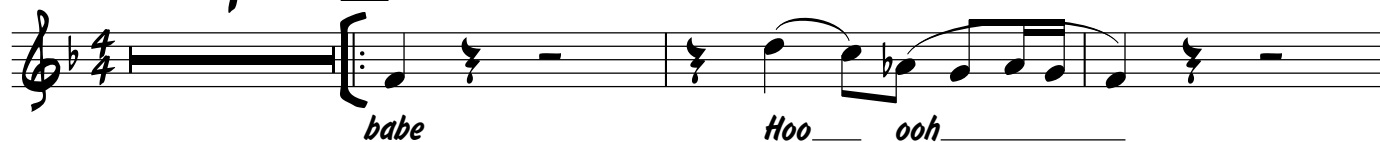
Stevie Wonder

♩ = 110 (Soul)

(Vocals)

A Tacet 1st X

4



27

2

1.

2

Yeah_

Whoa.

33

2.

2

Here I am.

36

D

ba - by

Signed, sealed, del-iv-ered I'm yours

Yeah_

Here I am.

40

ba - by

Signed, sealed, del-iv-ered I'm yours

Yeah_

44

E

Heavy Swing!

Signed

De - liv - ered

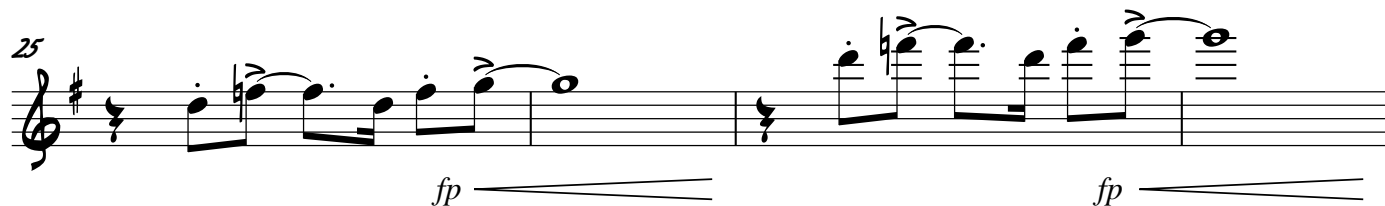
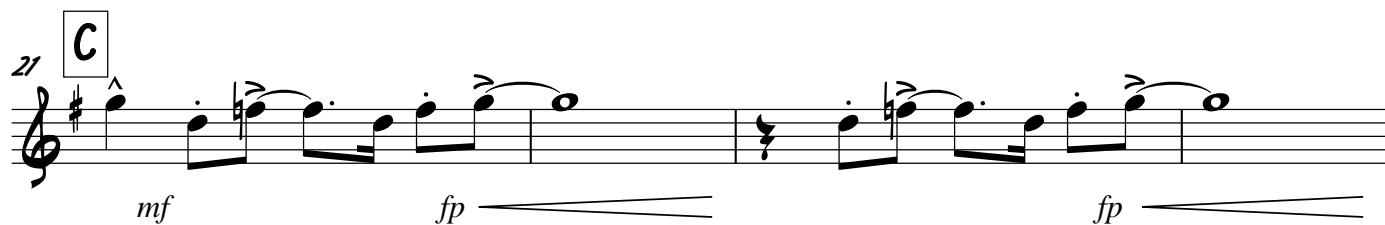
Yeah_

Trumpet I

Signed, Sealed, Delivered

Stevie Wonder

♩ = 110 (Soul)



29 1.

f

33 2.

36 D

mf *fp* *fp*

40

fp *fp*

44 E

f *ff*

Heavy Swing!

46

Trombone

Signed, Sealed, Delivered

Stevie Wonder

♩ = 110 (Soul)

2

(Vocals)

A

5

mf

2

10

fp

f

13

B

mf

mf cresc.

17

fp

fp

f

21

C

mf

fp

fp

25

fp

fp

29 1.

f

Detailed description: This block contains the first ending of a musical phrase. It starts at measure 29 and ends at measure 32. The notation is in bass clef with a key signature of one flat (B-flat). The melody consists of eighth and sixteenth notes with various articulations like accents and slurs. A first ending bracket labeled '1.' spans measures 31 and 32, which end with a repeat sign.

33 2.

Detailed description: This block contains the second ending of the musical phrase, starting at measure 33 and ending at measure 36. The notation continues the melodic line with similar articulations. A second ending bracket labeled '2.' spans measures 35 and 36, which end with a repeat sign.

36 D

mf *fp* *fp*

Detailed description: This block contains section D, starting at measure 36 and ending at measure 39. The notation features a series of eighth notes with slurs and accents. The dynamics are marked as mezzo-forte (mf) at the start, and fortissimo (fp) with hairpins for the subsequent measures.

40

fp *fp*

Detailed description: This block contains measures 40 through 43. The notation continues the melodic line with slurs and accents. The dynamics are marked as fortissimo (fp) with hairpins for measures 41 and 43.

44 E

f *ff*

Detailed description: This block contains section E, starting at measure 44 and ending at measure 47. The notation features a series of eighth notes with slurs and accents. The dynamics are marked as forte (f) at the start, and fortissimo (ff) for the subsequent measures.

Heavy Swing!

46

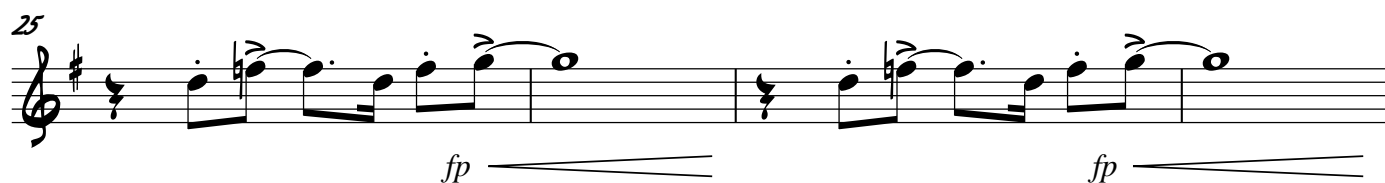
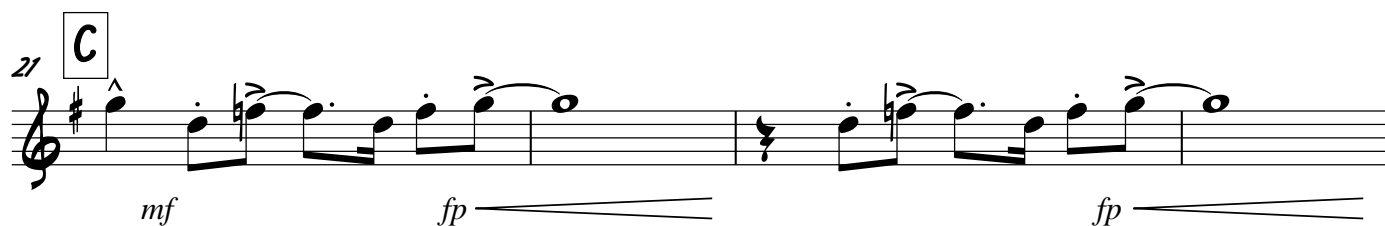
Detailed description: This block contains measures 46 through 49. The notation continues the melodic line with slurs and accents. A hairpin is visible at the bottom of the staff, indicating a dynamic change or crescendo.

Tenor Saxophone

Signed, Sealed, Delivered

Stevie Wonder

♩ = 110 (Soul)



29 1.

f

33 2.

f

36 D

mf *fp* *fp*

40

fp *fp*

44 E

f *ff*

Heavy Swing!

46

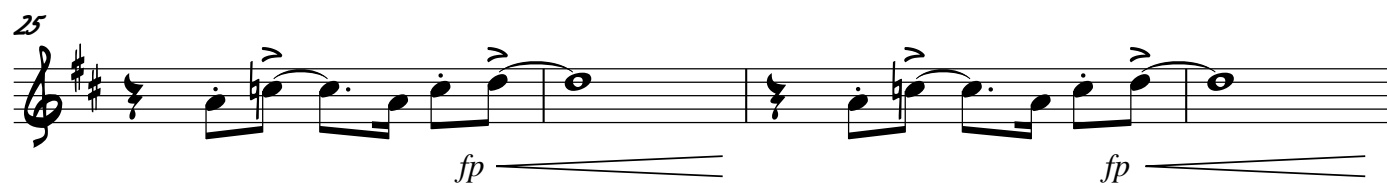
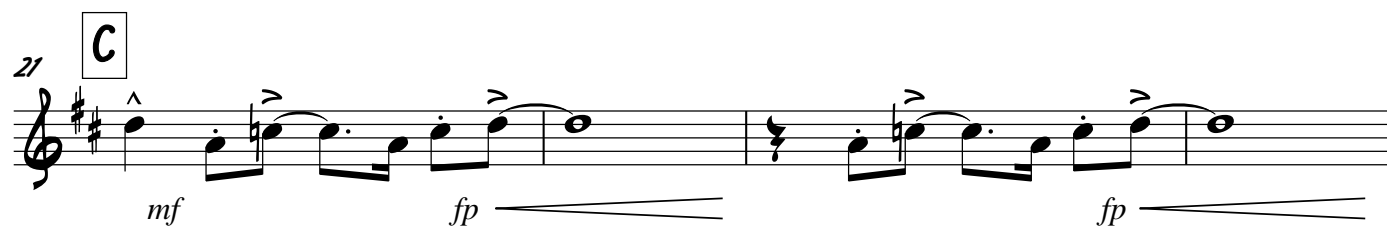
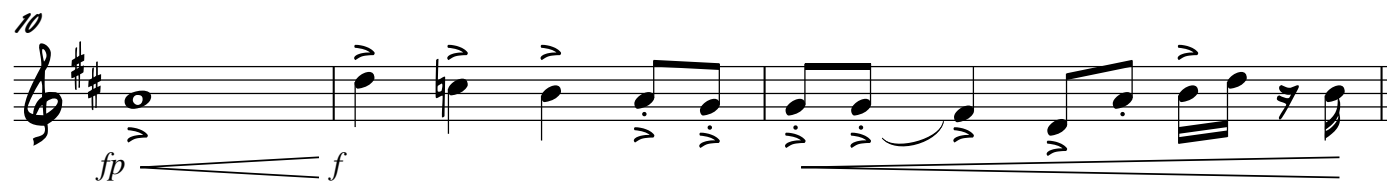
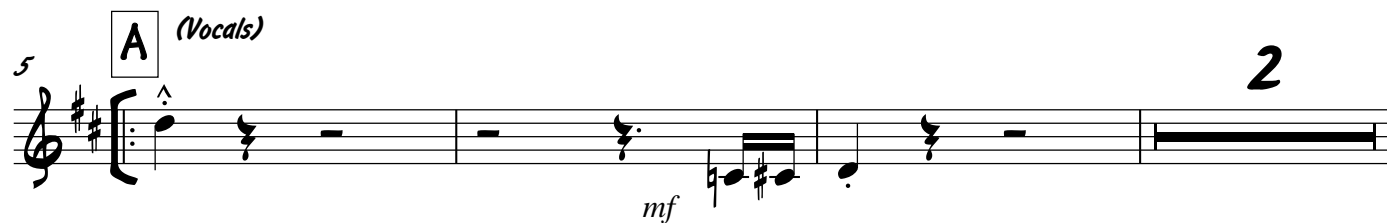
f

Baritone Saxophone

Signed, Sealed, Delivered

Stevie Wonder

♩ = 110 (Soul)



29 1.

f

33 2.

36 D

mf *fp* *fp*

40

fp *fp*

44 E

f *ff*

Heavy Swing!

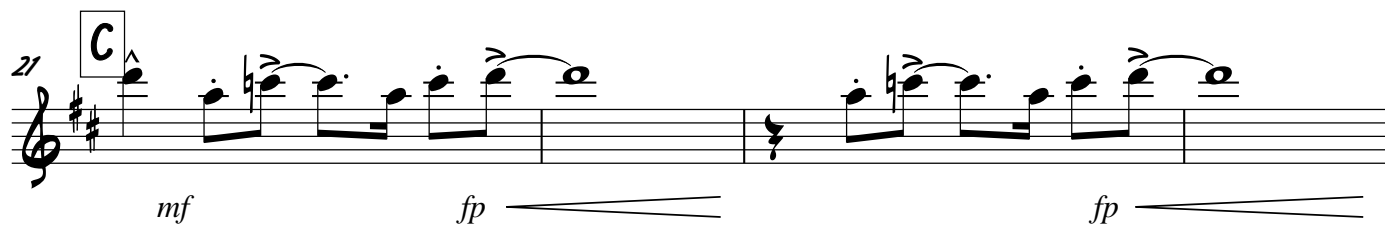
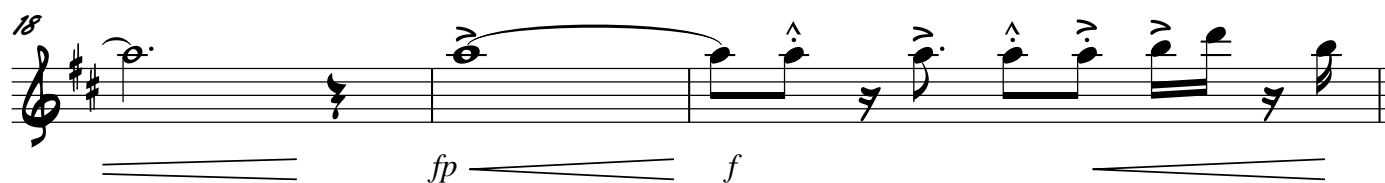
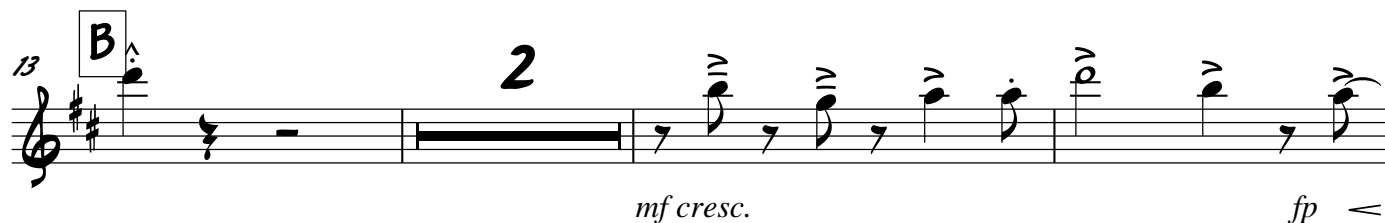
46

Alto Saxophone

Signed, Sealed, Delivered

Stevie Wonder

♩ = 110 (Soul)



29 1.

f

33 2.

f

36 D

mf *fp* *fp*

40

fp *fp*

44 E

f *ff*

Heavy Swing!

46

f *ff*

Signed, Sealed, Delivered

Stevie Wonder

♩ = 110 (Soul)

[illegible]

18

fp *f*

27 C

mf *fp* *fp*

25

f *f*

29 1.

f

33 2.

36 D

mf *fp* *fp*

40

fp *fp*

44 E

f *ff*

Heavy Swing!

46

Guitar

Signed, Sealed, Delivered

Stevie Wonder

♩ = 110 (Soul)

2

F B^b F

5 **A** (Vocals)

F⁷ Dm⁷ F⁷ Dm⁷ F⁷/C

mf

9

B^b C⁹sus F B^b F

f

13 **B**

F⁷ Dm⁷ F⁷ Dm⁷ F⁷/C

mf

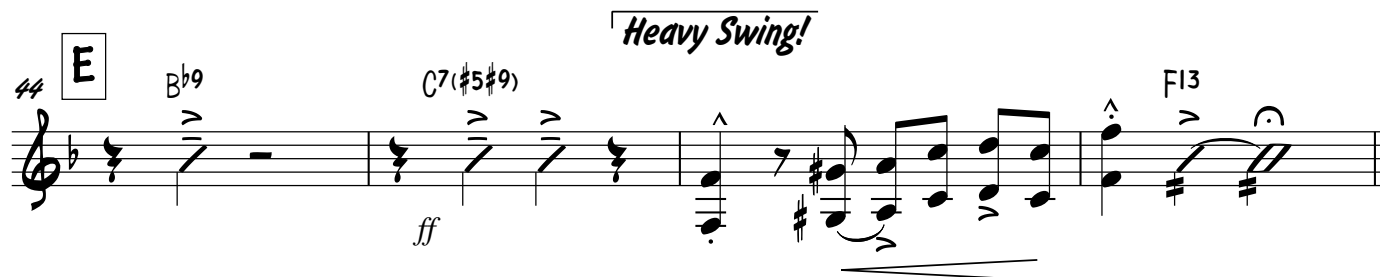
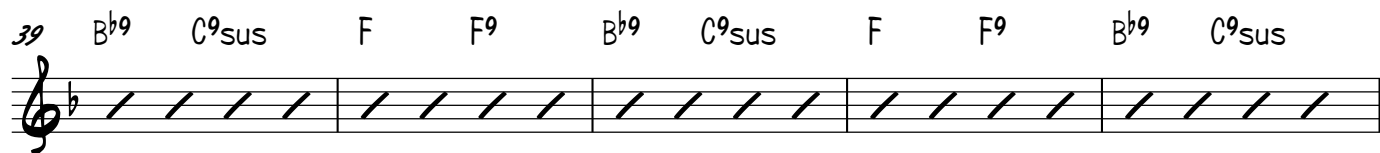
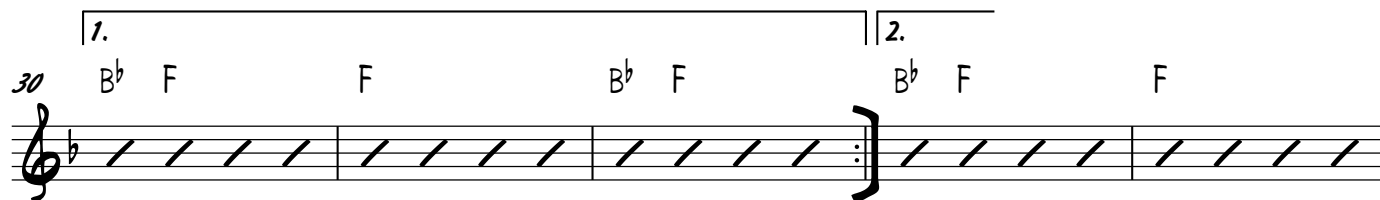
17

B^b C⁹sus F B^b F

f

21 **C**

F F⁹ B^b⁹ C⁹sus F F⁹ B^b⁹ C⁹sus



Drums

Signed, Sealed, Delivered

Stevie Wonder

♩ = 110 (Soul)

Drum notation for measures 1-4. The key signature is 4/4. Measure 1 has a bass drum on the 1st and 3rd beats, and a snare on the 2nd and 4th beats. Measure 2 has a bass drum on the 1st and 3rd beats, and a snare on the 2nd and 4th beats. Measure 3 has a bass drum on the 1st and 3rd beats, and a snare on the 2nd and 4th beats. Measure 4 has a bass drum on the 1st and 3rd beats, and a snare on the 2nd and 4th beats. The notation is marked with a forte *f* dynamic.

Drum notation for measures 5-8. Measure 5 is marked with a box labeled 'A' and a plus sign. The notation is marked with a mezzo-forte *mf* dynamic. Measures 6-8 are marked with a *sim..* (simile) dynamic. The notation is marked with a forte *f* dynamic. The measures are grouped with a (4) indicating a four-measure phrase.

Drum notation for measures 9-12. Measures 9-10 are marked with a (6) indicating a six-measure phrase. Measures 11-12 are marked with a forte *f* dynamic. The notation is marked with a forte *f* dynamic.

Drum notation for measures 13-16. Measure 13 is marked with a box labeled 'B' and a plus sign. The notation is marked with a mezzo-forte *mf* dynamic. Measures 14-16 are marked with a *sim..* (simile) dynamic. The notation is marked with a forte *f* dynamic. The measures are grouped with a (4) indicating a four-measure phrase.

Drum notation for measures 17-20. Measures 17-18 are marked with a (6) indicating a six-measure phrase. Measures 19-20 are marked with a forte *f* dynamic. The notation is marked with a forte *f* dynamic.

Drum notation for measures 21-23. Measure 21 is marked with a box labeled 'C' and a plus sign. The notation is marked with a mezzo-forte *mf* dynamic. Measures 22-23 are marked with a *sim..* (simile) dynamic. The notation is marked with a forte *f* dynamic.

Drum notation for measures 24-26. Measures 24-25 are marked with a (4) indicating a four-measure phrase. Measures 26-27 are marked with a (6) indicating a six-measure phrase. The notation is marked with a forte *f* dynamic.

27

Fill

f

30

1.

Fill

33

2.

Fill

36

D

Rd. Bell

sim..

39

(4)

(6)

43

Fill

E

ff

Heavy Swing!

46

Bass

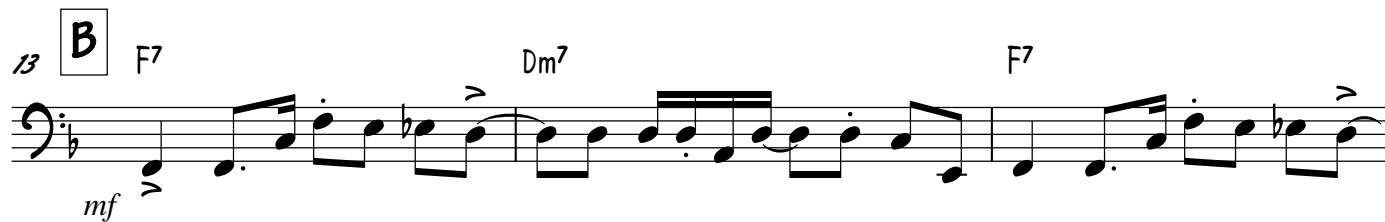
Signed, Sealed, Delivered

Stevie Wonder

♩ = 110 (Soul)



(Vocals)



21 **C** F F⁹ B^b9 C⁹sus F F⁹ B^b9 C⁹sus

25 F F⁹ B^b9 C⁹sus F F⁹ B^b9 C⁹sus

29 1. F B^b F F B^b F

33 2. B^b F F B^b F

36 **D** F F⁹ B^b9 C⁹sus F F⁹ B^b9 C⁹sus

40 F F⁹ B^b9 C⁹sus F F⁹

43 B^b9 C⁹sus **E** Heavy Swing! F13

ff

The image shows a bass line for the song "Signed, Sealed, Delivered". It consists of six staves of music. The first staff (measures 21-24) is in C major, with a key signature of one flat (Bb) and a common time signature (C). The second staff (measures 25-28) continues in C major. The third staff (measures 29-32) is in Bb major, with a key signature of two flats (Bb, Eb) and a common time signature (C). The fourth staff (measures 33-36) continues in Bb major. The fifth staff (measures 37-40) is in D major, with a key signature of two sharps (F#, C#) and a common time signature (C). The sixth staff (measures 41-44) is in E major, with a key signature of three sharps (F#, C#, G#) and a common time signature (C). The music features various chords (F, F9, Bb9, C9sus, F13) and a variety of rhythmic patterns, including eighth and sixteenth notes, and rests. The piece ends with a double bar line and a fermata over the final chord.

Piano

Signed, Sealed, Delivered

Stevie Wonder

♩ = 110 (Soul)

Piano introduction in 4/4 time, key of B-flat major. The piece starts with a forte (f) dynamic. The right hand features a series of chords and eighth-note patterns, while the left hand provides a steady bass line with eighth notes and some triplet figures. The introduction concludes with a final chord and a short melodic flourish in the left hand.

5 **A** (Vocals) F⁷ Dm⁷ F⁷

Vocal line for section A, starting at measure 5. The staff is marked with a mezzo-forte (mf) dynamic. The line consists of three measures of rests, each with a slash, indicating where the vocal melody would be performed.

8 Dm⁷ F⁷/C B^b C⁹sus

Piano accompaniment for section A, starting at measure 8. The staff is marked with a mezzo-forte (mf) dynamic. It consists of three measures of rests, each with a slash, indicating where the piano accompaniment would be performed.

Piano introduction for section B, starting at measure 11. The piece continues with a forte (f) dynamic. The right hand features a series of chords and eighth-note patterns, while the left hand provides a steady bass line with eighth notes and some triplet figures. The introduction concludes with a final chord and a short melodic flourish in the left hand.

13 **B** F⁷ Dm⁷ F⁷

Vocal line for section B, starting at measure 13. The staff is marked with a mezzo-forte (mf) dynamic. The line consists of three measures of rests, each with a slash, indicating where the vocal melody would be performed.

16 Dm⁷ F⁷/C B^b C⁹sus

Piano accompaniment for section B, starting at measure 16. The staff is marked with a mezzo-forte (mf) dynamic. It consists of three measures of rests, each with a slash, indicating where the piano accompaniment would be performed.

19 F B^b F

f

21 **C** F F⁹ B^{b9} C⁹sus F F⁹ B^{b9} C⁹sus

25 F F⁹ B^{b9} C⁹sus F F⁹ B^{b9} C⁹sus

29 F B^b F F B^b F

1.

f

33 2. B^b F F B^b F

36 **D** F F^9 B^b9 C^9sus F F^9 B^b9 C^9sus

40 F F^9 B^b9 C^9sus F F^9 B^b9 C^9sus

44 **E** B^b9 $C7(\#5\#9)$ *ff*

Heavy Swing!

46 $F13$