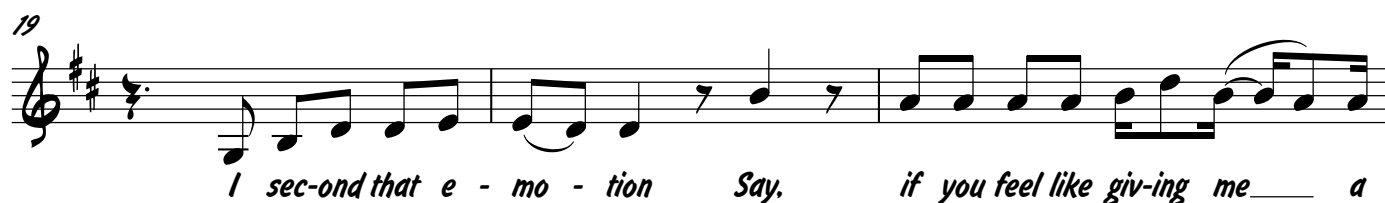
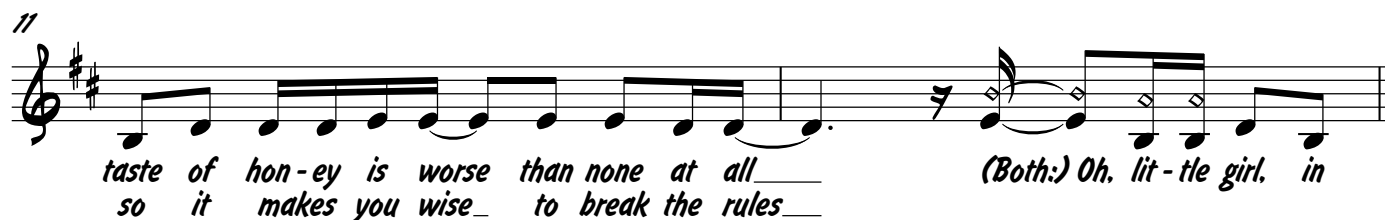
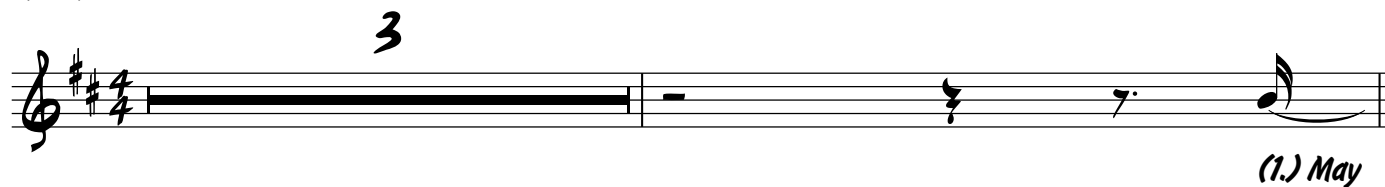


# I Second That Emotion


Smokey Robinson &  
The Miracles

♩ = 95 (Soul)




*To Coda* 

22




life-time of de-vo - tion



I sec-ond that e - mo - tion

25


1. 2.



Oh. May Oh. Oh.

27


**D**




Oh. Oh. Oh. lit-tle girl in

*D.S. al Coda*

31

*Coda* 



Oh. girl, I sec-ond that e - mo - tion Oh. lit-tle girl, I sec-ond that e -

34



mo - tion Yeah. lit - tle girl I sec - ond that e -

36

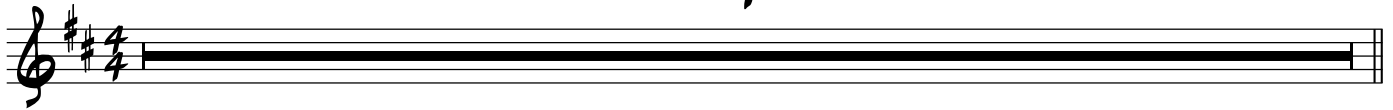


mo - tion Yeah. lit-tle girl I sec-ond that e - mo - tion

# I Second That Emotion

♩ = 95 (Soul)

4



(Vocals)

**A**

Tacet 1st X

2

2



All Xs

**B**

S.

13

**C**

17



21

if you feel ilke giv-ing me Ooh

23

Sec-ond that e-mo-tion To Coda

25

1. 2. D 3

*D.S. al Coda*

31

Coda Sec-ond that e-mo-tion Sec-ond that e-mo-tion

35

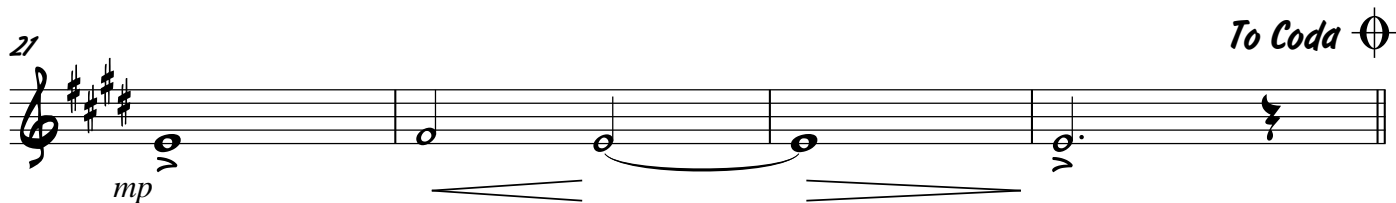
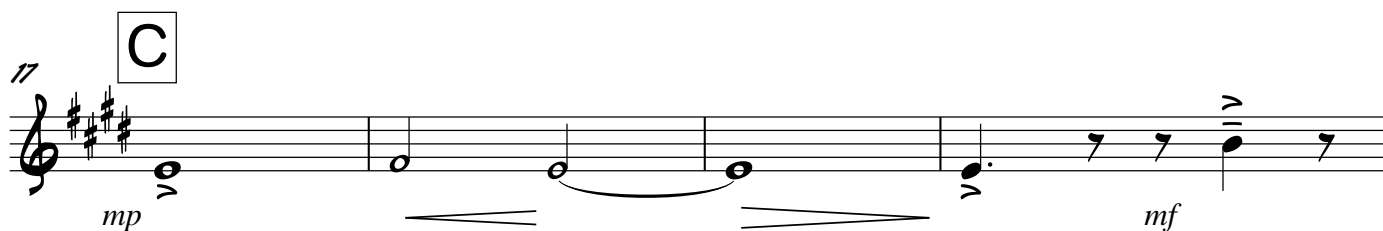
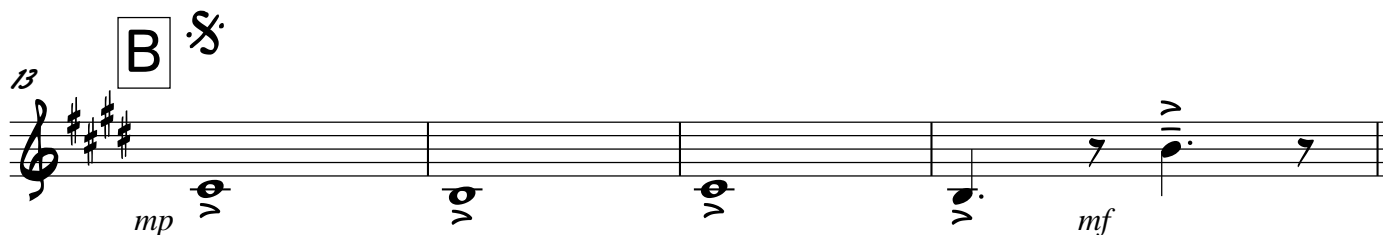
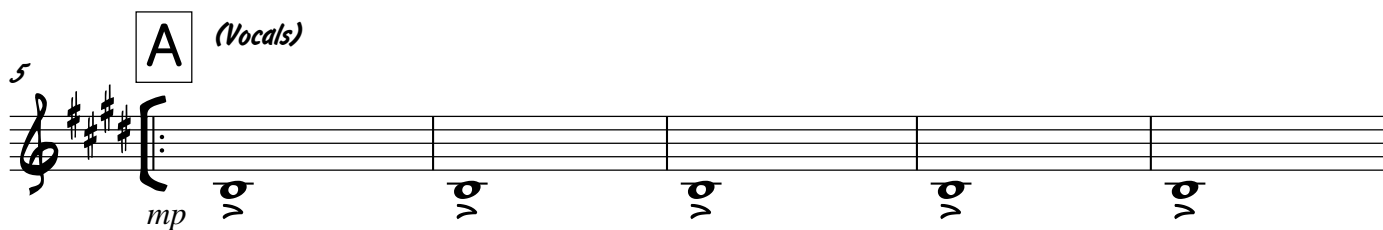
Sec-ond that e-mo-tion Sec-ond that e-mo-tion

Trumpet II

# I Second That Emotion

Smokey Robinson &  
The Miracles

♩ = 95 (Soul)



25

1. 2.

*f*

27

D

3

*f*

*D.S. al Coda*

31

Coda

*f*

33

*f*

35

*f*

37

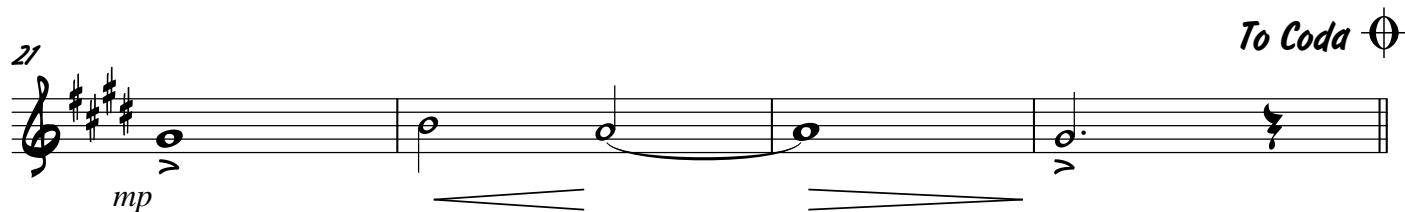
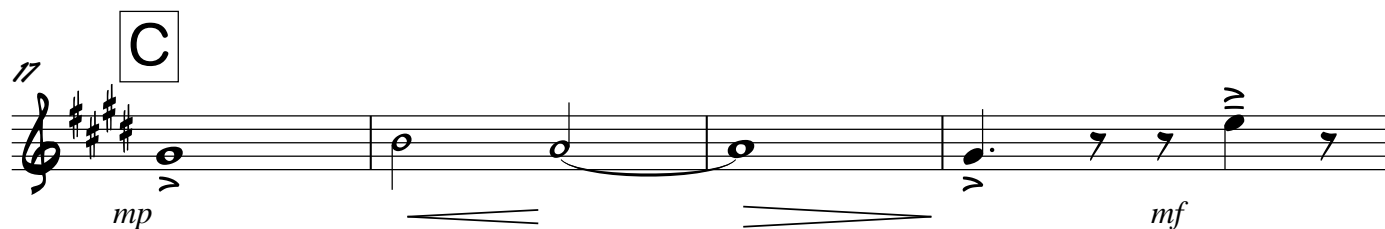
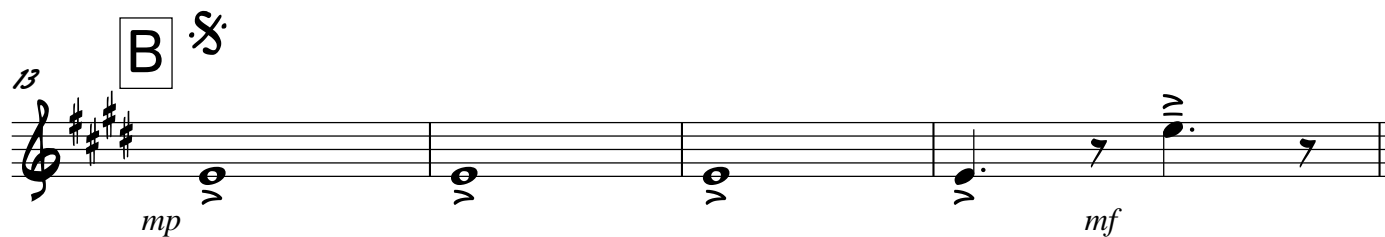
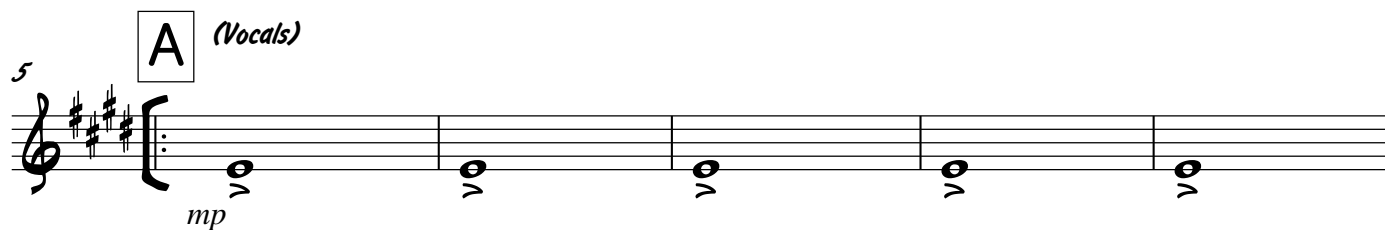
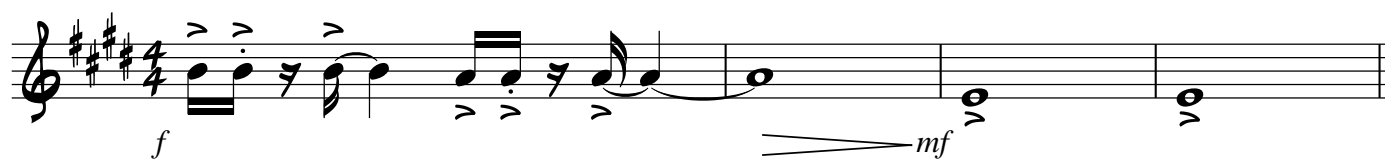
*f*

Trumpet I

# I Second That Emotion

Smokey Robinson &  
The Miracles

♩ = 95 (Soul)



25

1. 2.

*f*

27

**D**

3

*D.S. al Coda*

Coda

31

*f*

33

*f*

35

*f*

37

*f*

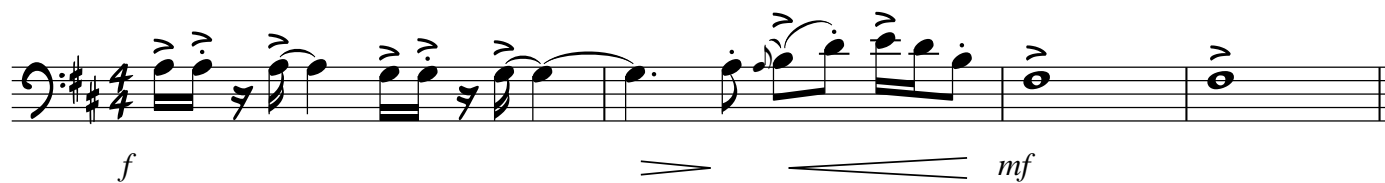


Trombone

# I Second That Emotion

Smokey Robinson &  
The Miracles

♩ = 95 (Soul)



25 1. 2.

*f* *f*

27 D (Unison)

*f*

*D.S. al Coda*

31 *Coda*

*f*

33

*f*

35

*f*

37

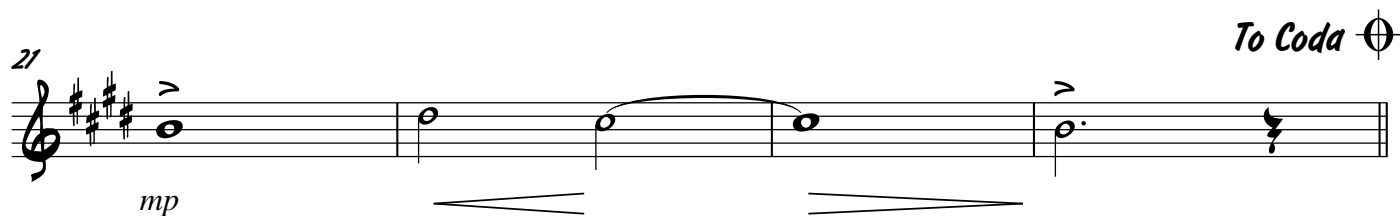
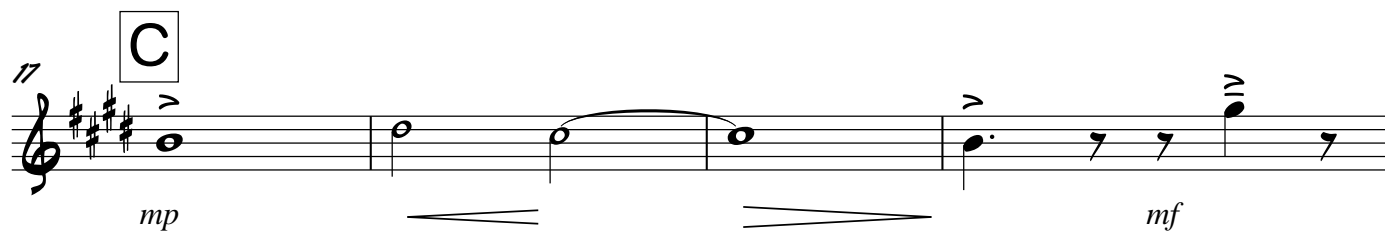
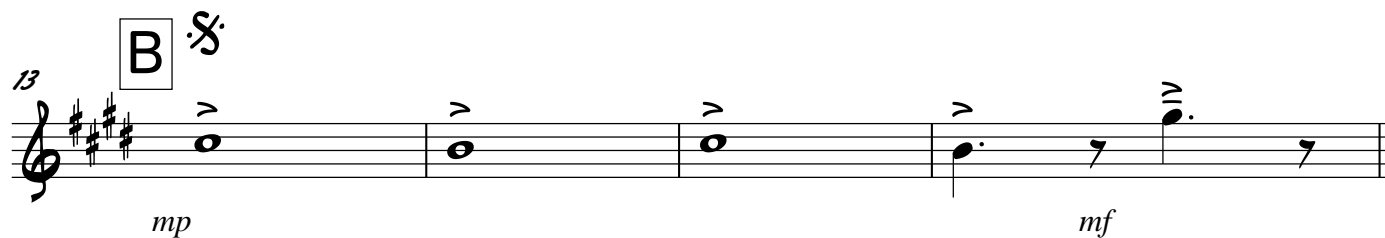
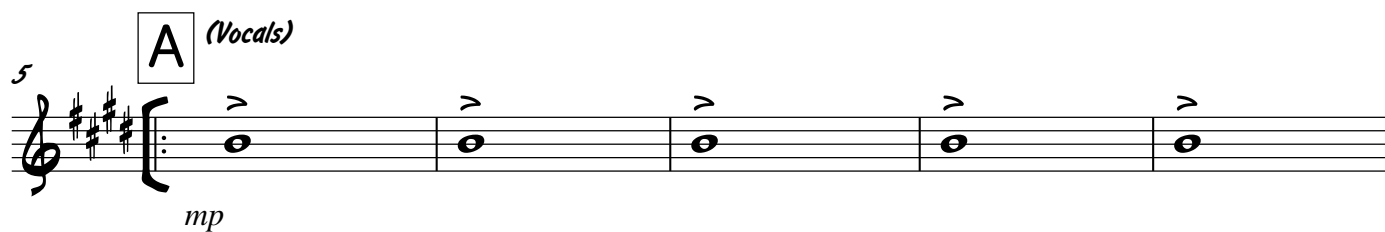
*f*

Tenor Saxophone

# I Second That Emotion

Smokey Robinson &  
The Miracles

♩ = 95 (Soul)



25

1. 2.

*f* *f*

27

**D** (Unison)

*f*

*D.S. al Coda*

31

Coda

*f*

33

*f* *f*

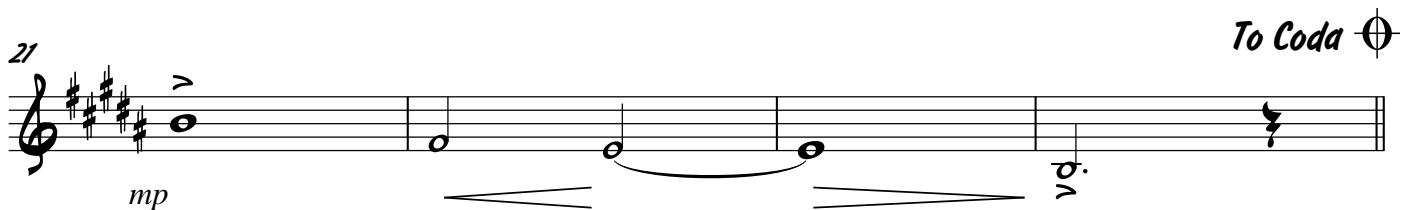
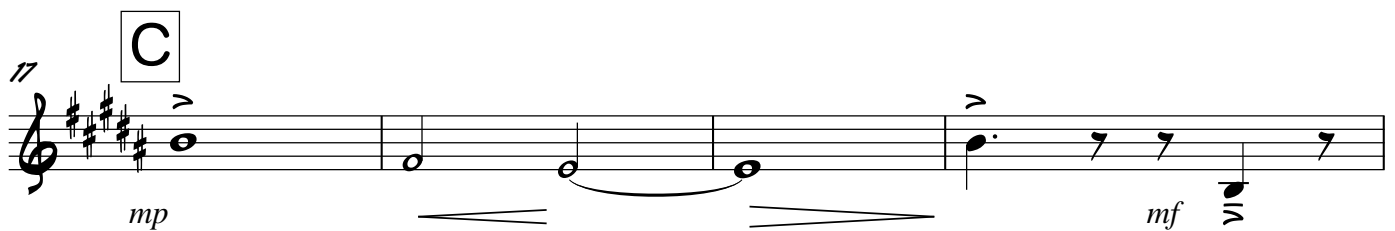
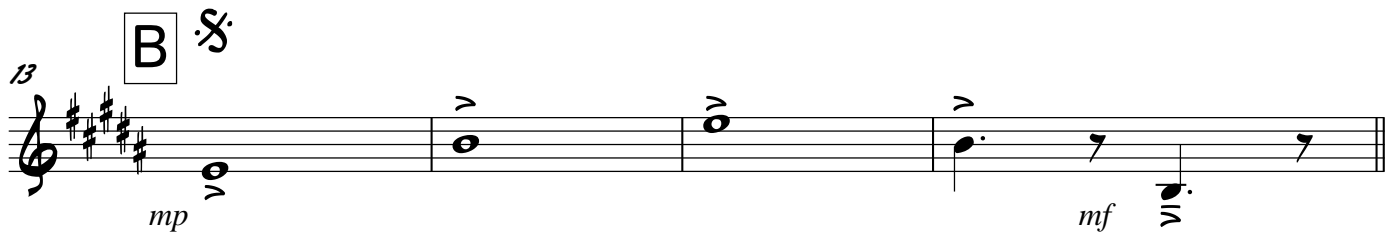
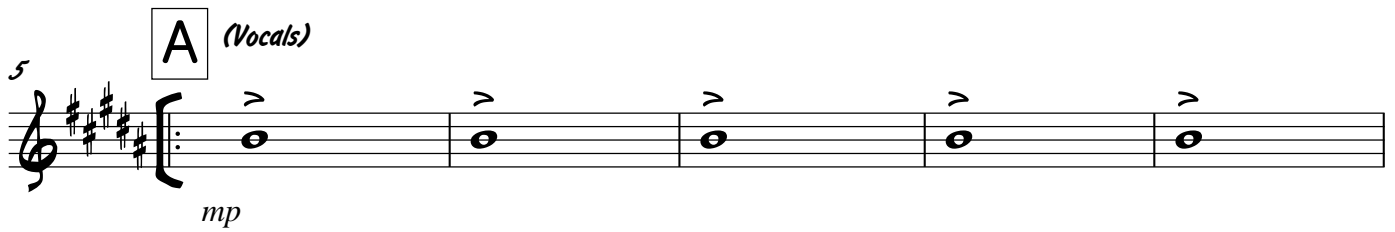
36

*f*

# I Second That Emotion

Smokey Robinson &  
The Miracles

♩ = 95 (Soul)



25

1. 2.

*f*

27

**D**

3

*D.S. al Coda*

Coda

31

*f*

33

*f*

35

*f*

37

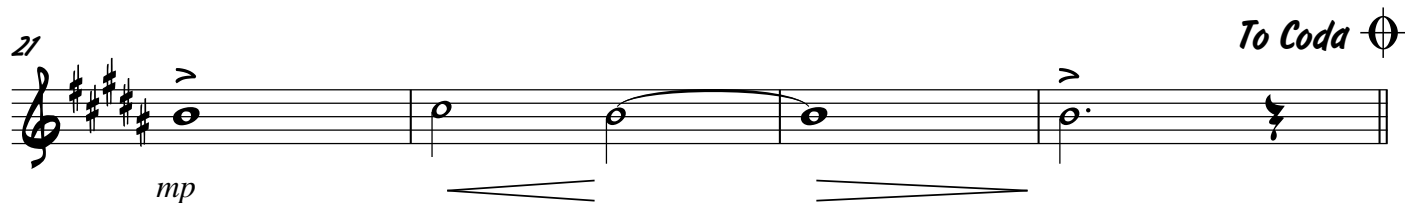
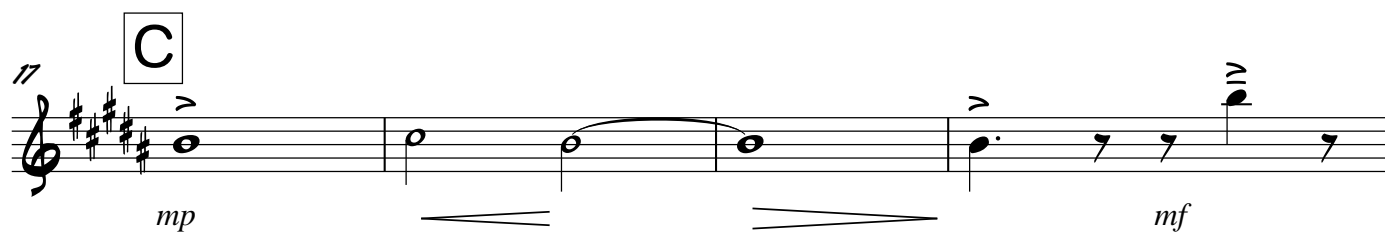
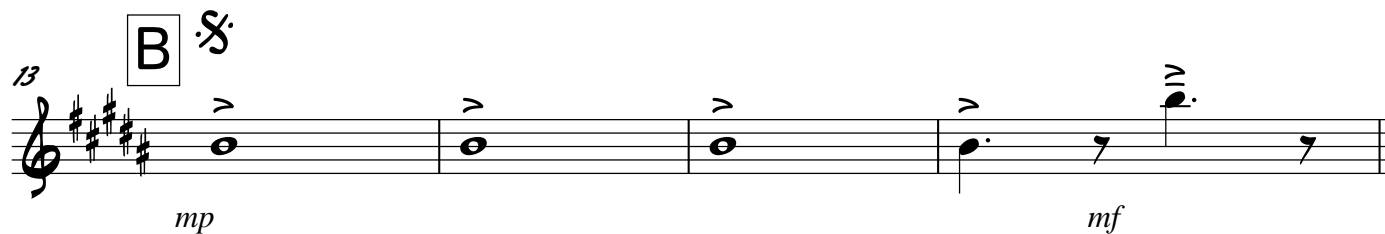
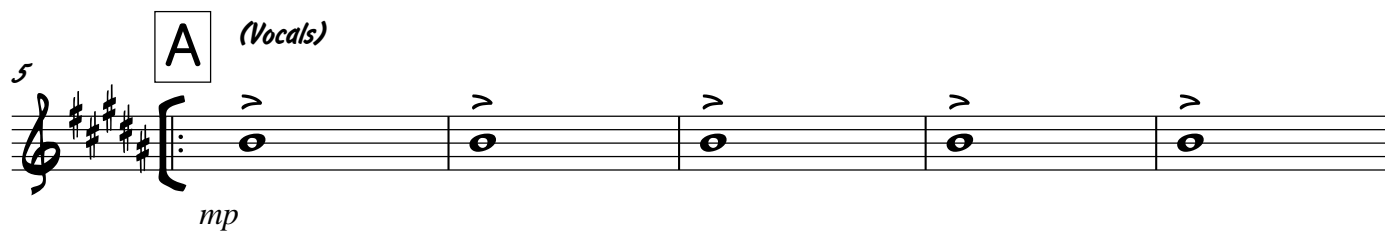
*f*

Alto Saxophone

# I Second That Emotion

Smokey Robinson &  
The Miracles

♩ = 95 (Soul)



25

1. 2.

*f*

27

**D** (Unison)

*f*

*D.S. al Coda*

31

Coda

*f*

33

*f*

*f*

36

*f*

**Coda**



Piano

# I Second That Emotion

Smokey Robinson &  
The Miracles

♩ = 95 (Soul)

A G D

*f* *mf* *sim...*

(Vocals)

5 A D

9 G A D

13 B G D G D

*f*

17 C D A G D

*mf* *f*

21 A G D To Coda

*mf*

# I Second That Emotion

Piano

2

25

1. A G 2. A G

*f*

27

D D A G D

*D.S. al Coda*

31

A G D

*f*

Coda

33

A G D

35

A G D

37

A G D

Guitar

# I Second That Emotion

Smokey Robinson &  
The Miracles

♩ = 95 (Soul)

1

*f*

A G

3

*mf*

D

*sim..*

5

(Vocals)

A D

*sim..*

8

11

G A D

13

B

G D G D

*f*

17

C

D A G D

*mf*

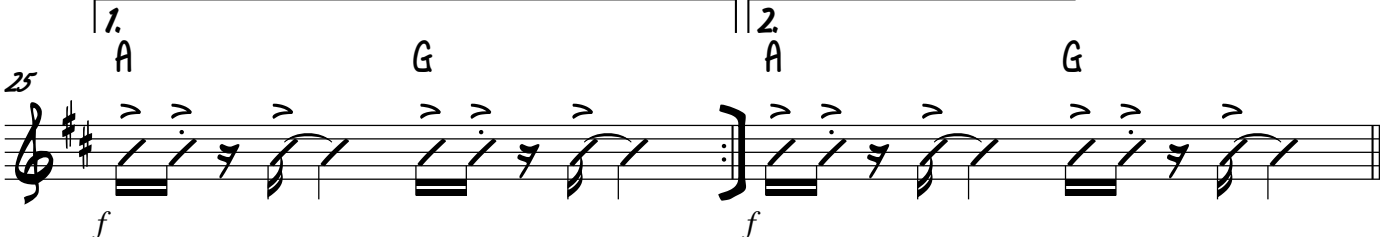
*f*

I Second That Emotion


21 *mf* A G D To Coda 





25 *f* 1. A G 2. A G *f*



27  D A G D *D.S. al Coda*



Coda  31 *f* A G D



33 A G D



35 A G D



37 A G D



## Drums

# I Second That Emotion

Smokey Robinson &  
The Miracles

♩ = 95 (Soul)

(Opt. Tacet)

*f*

*mf*

(Vocals)

**A**

5

(2)

*sim...*

9

*sim...*

Fill

**B**

13

(2)

*sim...*

*f*

**C**

17

(2)

*mf*

*sim...*

*f*



Bass

# I Second That Emotion

Smokey Robinson &  
The Miracles

♩ = 95 (Soul)

Chord progression: A G D

*f* *mf*

(Vocals)

5 **A** D

8

11 G A D

13 **B** G D G D

17 **C** D A G

20 D A G

*f* *mf*

This is a bass line for the song 'I Second That Emotion' by Smokey Robinson & The Miracles. The key signature is one sharp (F#), and the time signature is 4/4. The tempo is marked as 95 BPM (Soul). The piece is divided into sections A, B, and C. Section A (measures 1-10) features a bass line starting with a forte (f) dynamic, moving to mezzo-forte (mf) by measure 4. It includes a vocal line starting at measure 5. Section B (measures 11-16) continues the bass line with a forte (f) dynamic at the end. Section C (measures 17-20) features a mezzo-forte (mf) dynamic. The bass line is characterized by eighth and sixteenth notes, often beamed together, and includes various musical notations such as accents, slurs, and ties.

23 D To Coda

25 A G

27 D A G

29 D

31 A G D

Coda

33 A G D A G

36 D A G

D