

Vocals

I Can't Help Myself

The Four Tops

(Sugar Pie, Honey Bunch)

♩ = 132 (Soul)

5 A

Ooh— Sug-ar pie, Hon-ey bunch You know that I— live you

10

I can't help my-self I love you and no- bod - y else— In—

15 B

— and out my life you come and you go— Leav ing— just your

19

pic-ture be hind— and I've kissed it a thou-sand times When

23 C

— you snap your fin-ger or wink your eye— I come run-in' to you— I'm tied— to your

27

ap-ron strings— and there's noth ing— that I can— do— Ooh—

31 D (Sax Solo)

3

34

Can't help my- self — No. — I can't — help my - self 'Cause Su -

39 **E**

gar pie. Hon-eybunch I'm weak-er than a manshouldbe I can't

43

help my - self — I'm a fool — in love, you see — Wan-na tell

47 **F**

— you I don't love ya Tell — you that we're through and I've tried — but ev-erytime I

51

see your face — I get all — choked up in - side — When

55 **G**

— I call your name Girl, — it starts to flame Burn - in' in my heart Tear

58

- in' it all a-part No mat - ter how I try my love, — I can not hide 'Cause

61 **H**

Su - gar pie. Hon - ey bunch *You know that I weep for you__*
Do an - y - thing you ask me to__

64

I can't help my - self__ *I love_ you and no- bod - y else*
I want you__ and no- bod - y else

68 1. 2.

Ooh__ *Ooh__*

70 **I**

Su - gar pie. Hon - ey bunch *You know that I__ love you__* *Can't*

74 **2**

help my - self *No.___ I can't help my - self__*

Background Vocals

I Can't Help Myself

The Four Tops

♩ = 132 (Soul)

(Sugar Pie, Honey Bunch)

6 **A** (Vocals) 3

Can't help my - self

15 **B**

In _____ and out my life Come and you go _____

19

Ooh Ooh

23 **C** 3

Can't help my-self Ooh

31 **D** (Sax Solo) 4

Ooh Ooh

39 **E**

Su garpie, Hon-eybunch Can't help my-self

47 **F** 3

Can't help my - self

55 **G** 2

Burn - in' in my heart Tear - in' it all a-part

61 **H**

Su gar pie. Hon-ey bunch Weep for you Can't Ask me to

65 2 1. 2.

help my - self

70 **I** 4

Su garpie, Hon-eybunch Love you Can't help my-self

Trumpet I

I Can't Help Myself

The Four Tops

♩ = 132 (Soul)

(Sugar Pie, Honey Bunch)

2

p

5

mf cresc.

7 **A** (Vocals) 8 **B** (Unison)

p

19

mf

23 **C**

p *mp*

28

mf cresc.

31 **D** (Sax Solo) 7

f

39 **E**

mp

43

mf

47 **F**

mp

51

mf

55 **G**

2

p

59

mf cresc.

61 **H**

mf

65

68

1. 2.

70 **I**

mp *mf*

74

76

cresc. *f*

Trombone

I Can't Help Myself

The Four Tops

♩ = 132 (Soul)

(Sugar Pie, Honey Bunch)

2

p

mf cresc.

A (Vocals) **B** (Unison)

p

mf

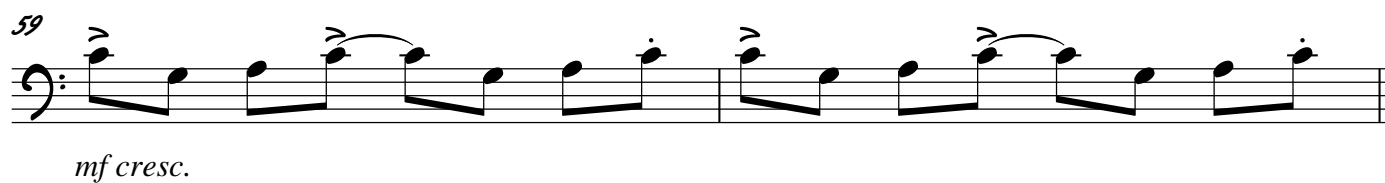
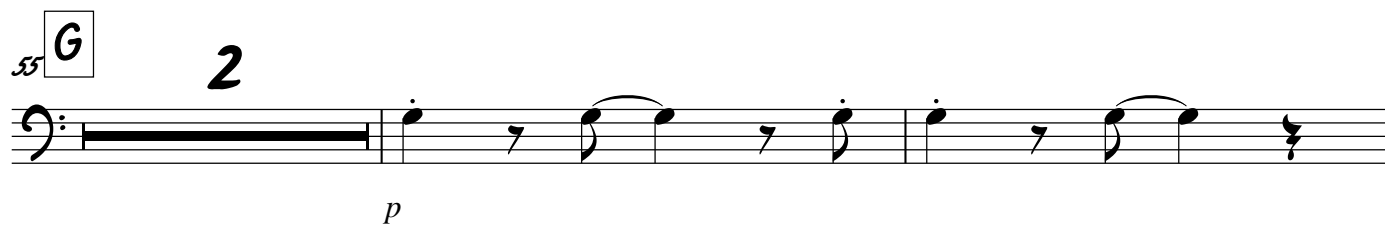
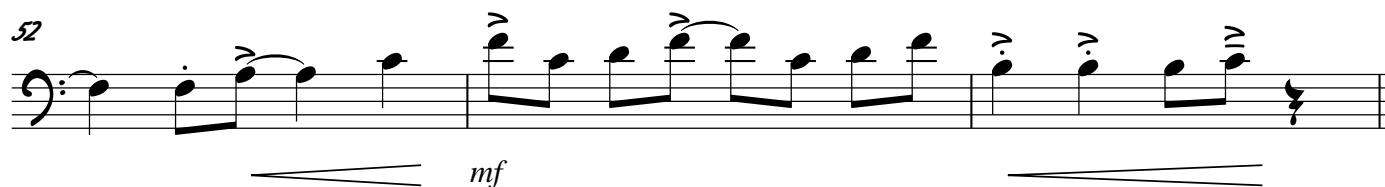
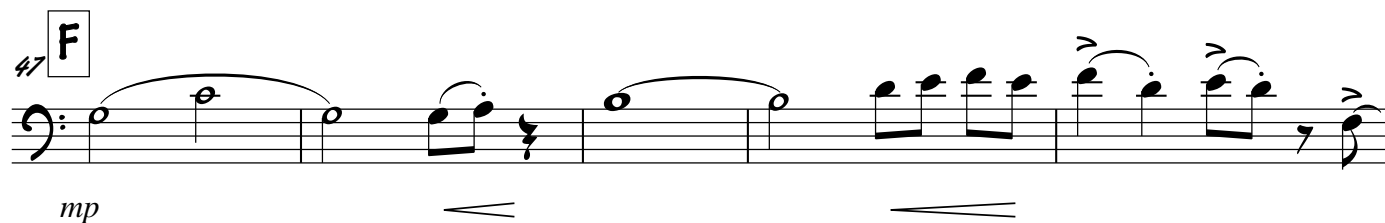
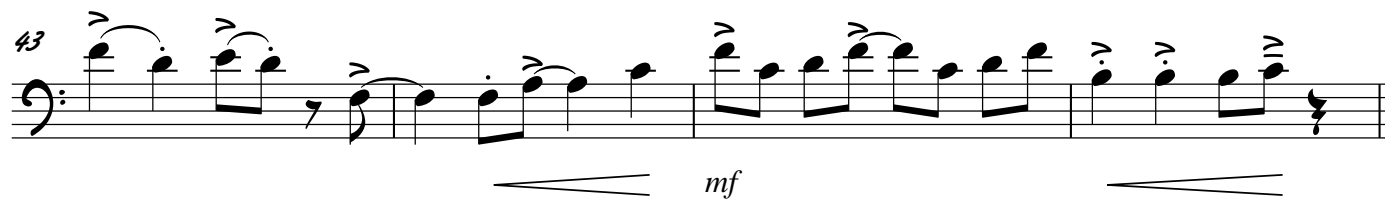
C

p *mp*

mf cresc.

D (Sax Solo) **7**

f



61 H

mf

65

68

mf

70 I

mp *mf*

74

76

cresc. *f*

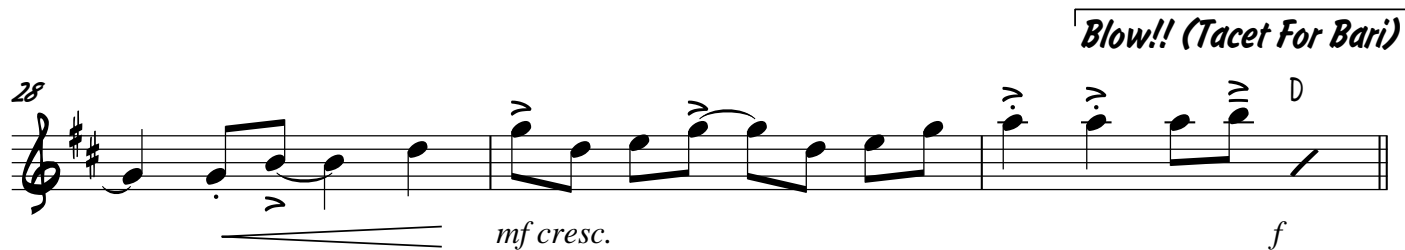
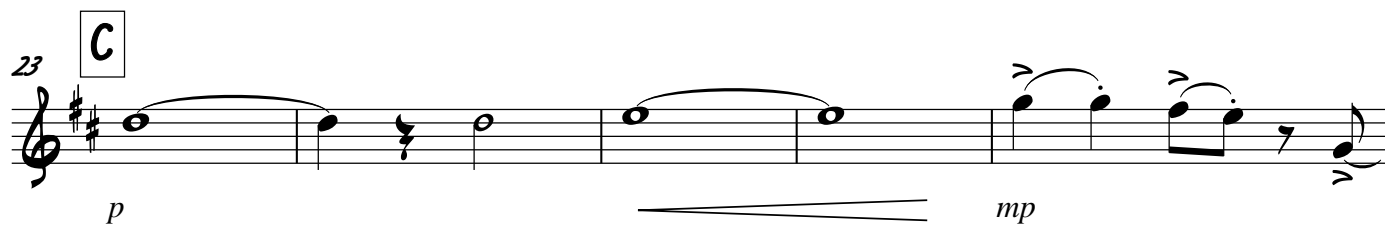
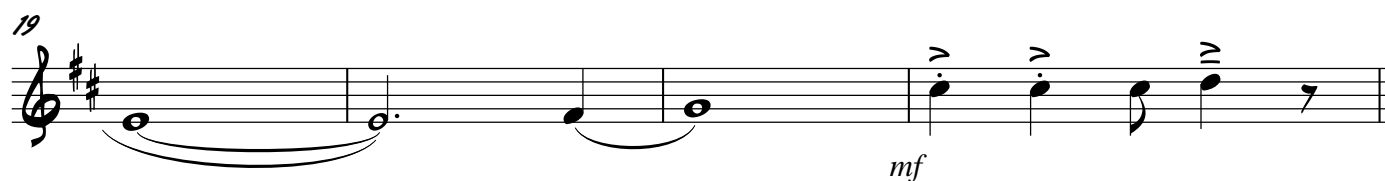
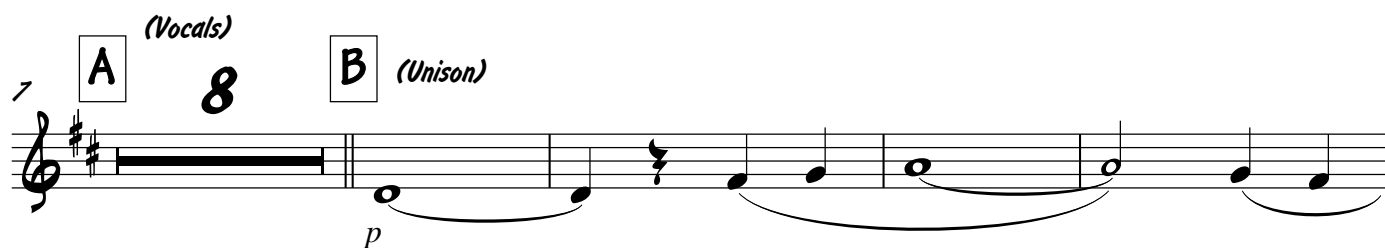
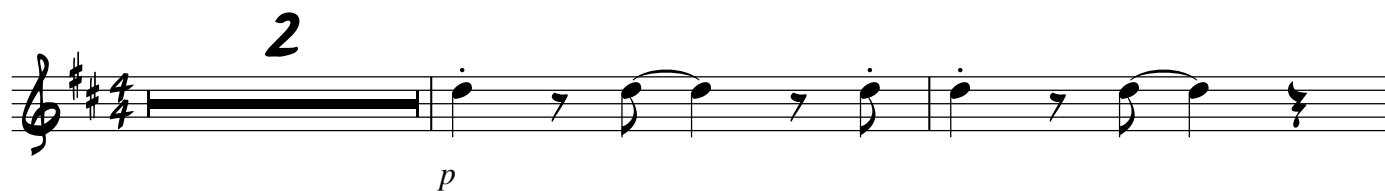
Tenor Saxophone

I Can't Help Myself

The Four Tops

♩ = 132 (Soul)

(Sugar Pie, Honey Bunch)



31 **D** (D) G/B A

35 Em F#m G (End Solo)

39 **E** mp

44 mf

47 **F** mp

52 mf

55 **G** 2 p

59

mf cresc.

61

H

mf

65

mf

68

1. 2.

mf

70

I

mp *mf*

75

cresc. *f*

Baritone Saxophone

I Can't Help Myself

The Four Tops

♩ = 132 (Soul)

(Sugar Pie, Honey Bunch)

2

mp cresc.

5

mf cresc.

7

A (Vocals)

8

B

mf

17

mf

20

mf

23

C

mf

27

Blow!!

A

cresc. *f*

31 **D** (A) D/F E

35 Bm C m D (End Solo)

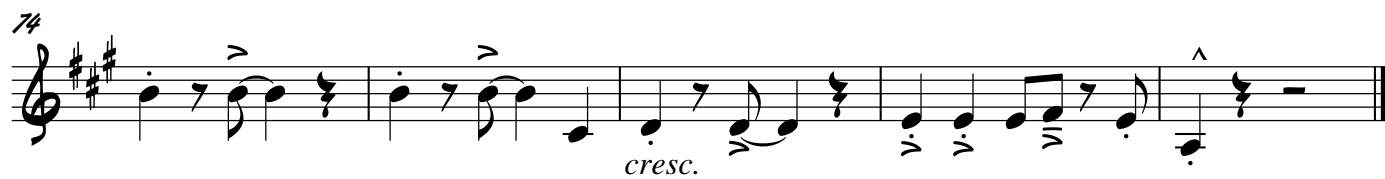
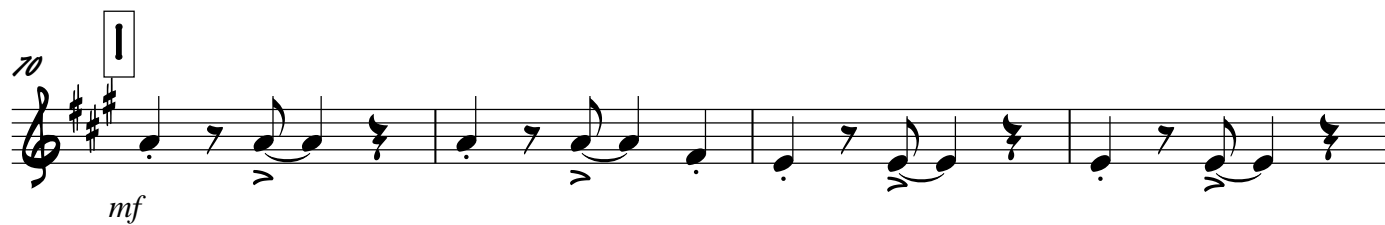
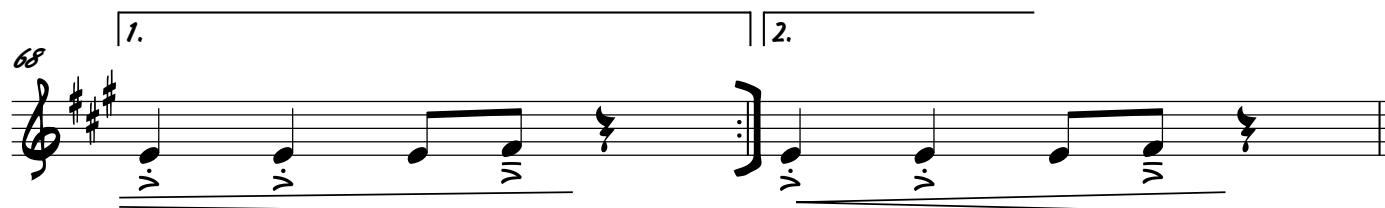
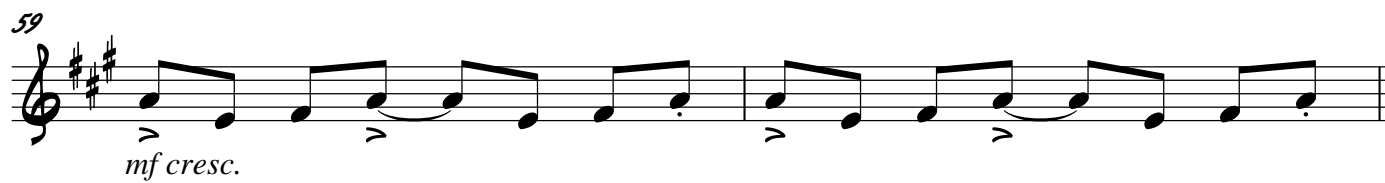
39 **E** mf

43

47 **F** mf

51

55 **G** 2 mp cresc.



Alto Saxophone

I Can't Help Myself

The Four Tops

♩ = 132 (Soul)

(Sugar Pie, Honey Bunch)

2

p

5

mf cresc.

7

A (Vocals)

8

B (Unison)

p

19

mf

23

C

p

mp

28

mf cresc.

31

D (Sax Solo)

7

f

39 **E**

mp

44

mf

47 **F**

mp

52

mf

55 **G** 2

p

59

mf cresc.

61 H

mp *mf*

65

mf

68

1. 2.

mf

70 I

mp *mf*

75

cresc. *f*

Trumpet II

I Can't Help Myself

The Four Tops

♩ = 132 (Soul)

(Sugar Pie, Honey Bunch)

2

p

5

mf cresc.

7 **A** (Vocals) 8 **B** (Unison)

p

19

mf

23 **C**

p *mp*

28

mf cresc.

31 **D** (Sax Solo) 7

f

39 **E**

mp

44

mf

47 **F**

mp

52

mf

55 **G**

2

p

59

mf cresc.

61 **H**

mf

65

68

1. 2.

70 **I**

mp *mf*

74

76

cresc. *f*

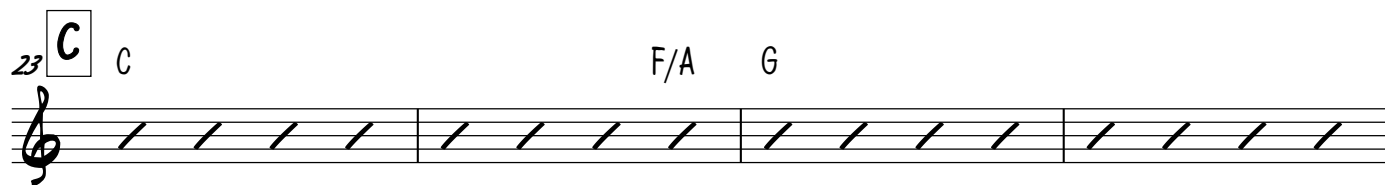
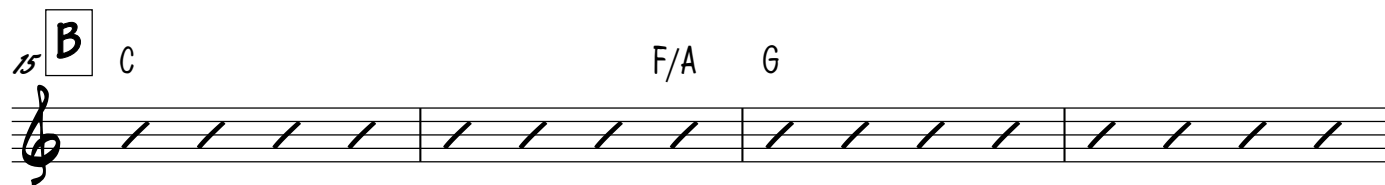
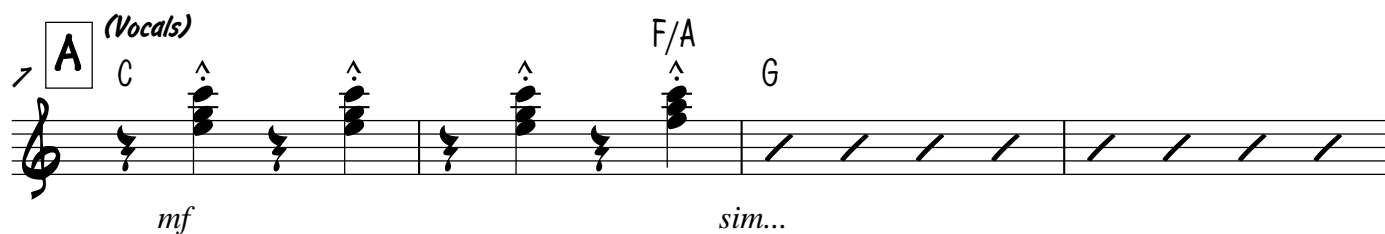
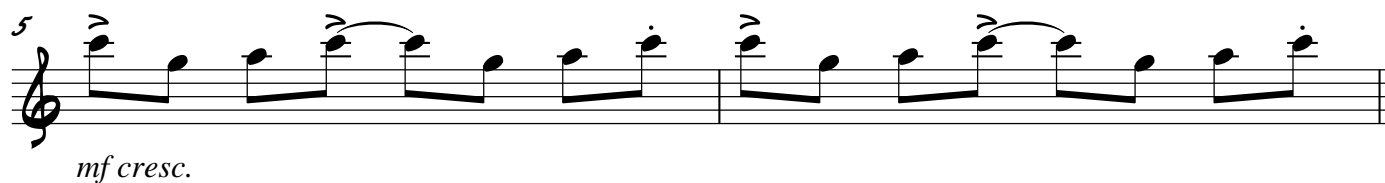
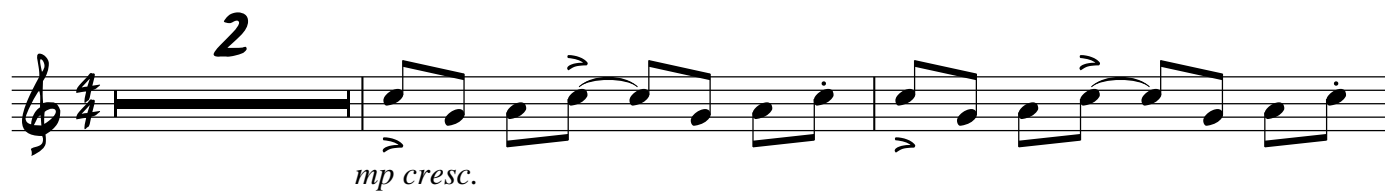
Guitar

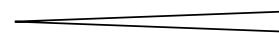
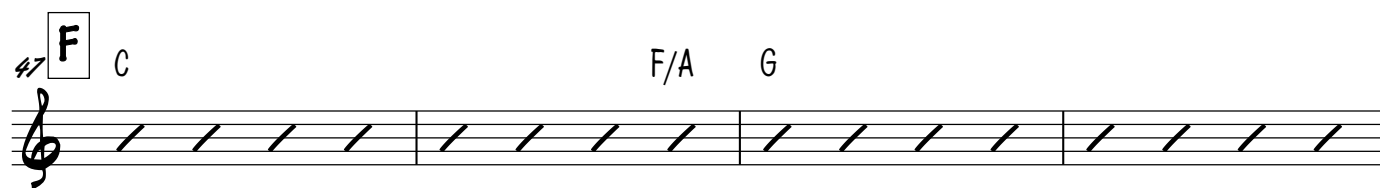
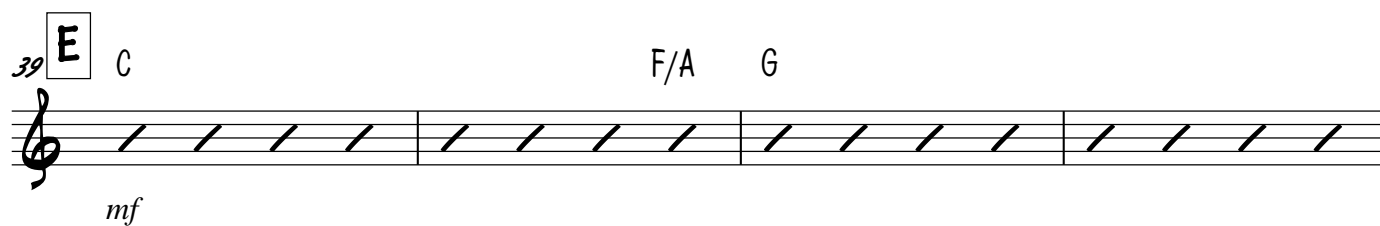
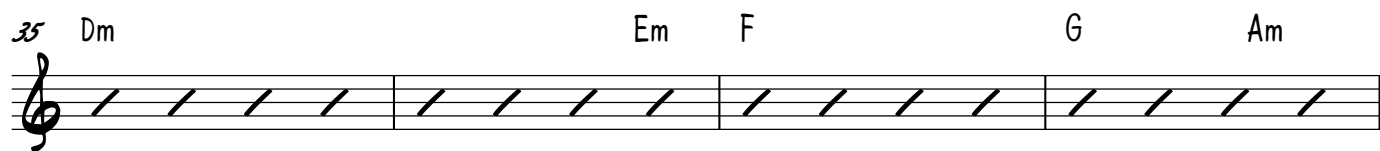
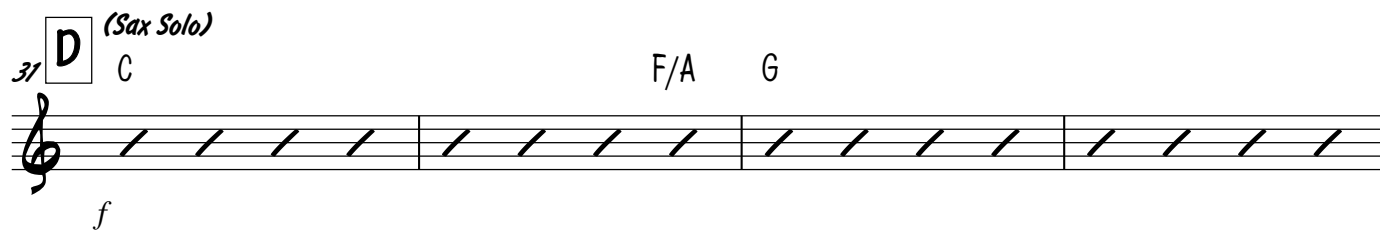
I Can't Help Myself

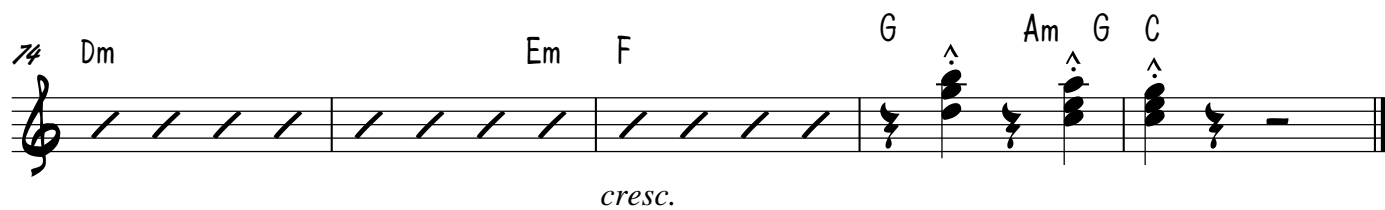
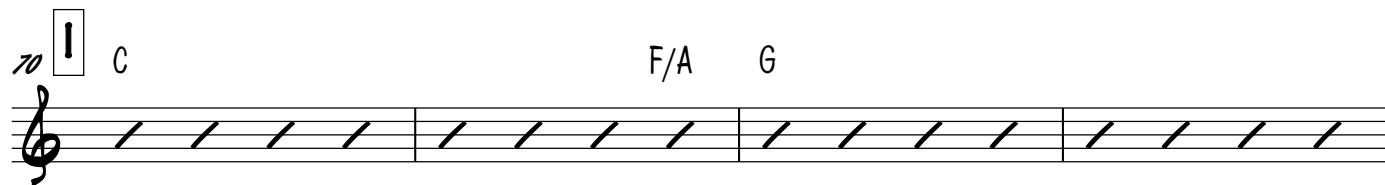
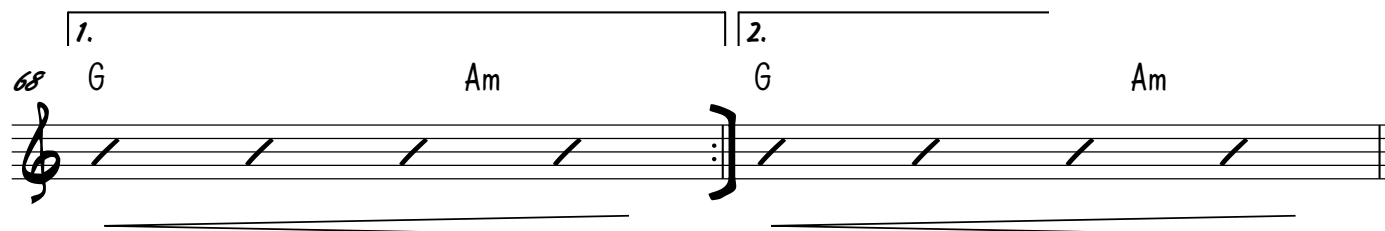
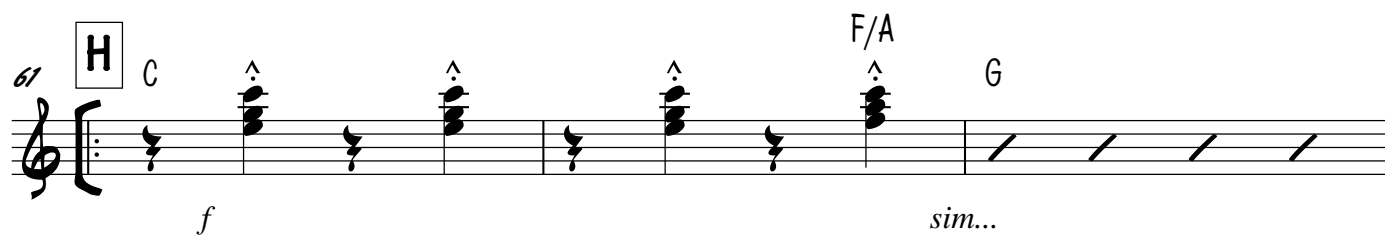
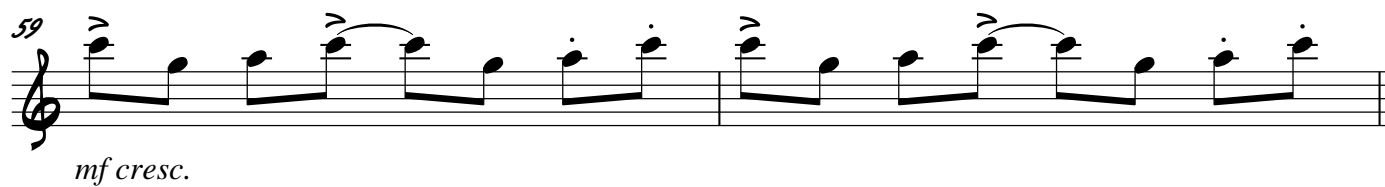
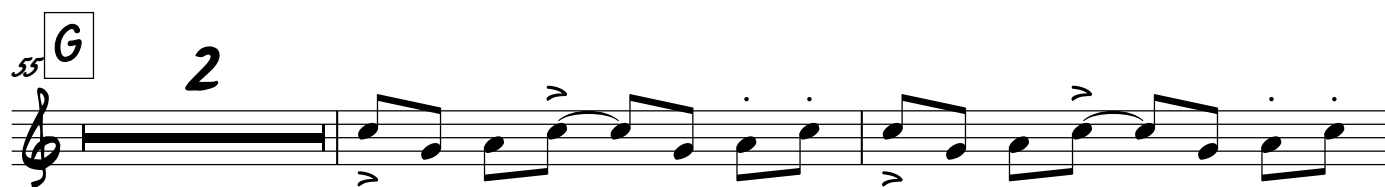
The Four Tops

(Sugar Pie, Honey Bunch)

♩ = 132 (Soul)



*cresc.*



Drums

I Can't Help Myself

The Four Tops

(Sugar Pie, Honey Bunch)

♩ = 132 (Soul)

4/4

mp cresc. *sim...*

4 (4) *mf cresc.*

7 **A** (Vocals) *mf* *sim...* (4)

11 (6) (8)

15 **B** *sim...* (4)

19 (6) (8)

23 **C** *sim...* (4)

27 (6) (8) *cresc.*

31 **D** ⁺ (Sax Solo)

f *sim...* (4)

35 (6) (8)

(6) (8)

39 **E** ⁺

mf *sim...* (4)

43 (6) (8)

(6) (8)

47 **F** ⁺

sim... (4)

51 (6) (8)

(6) (8)

55 **G**

f *sub mp cresc.* *sim...* (4)

59

mf cresc.

61

f *sim...*

64

(4) (6)

68

1. (8) 2. (8)

70

sim...

74

(6) (4)

cresc.

Bass

I Can't Help Myself

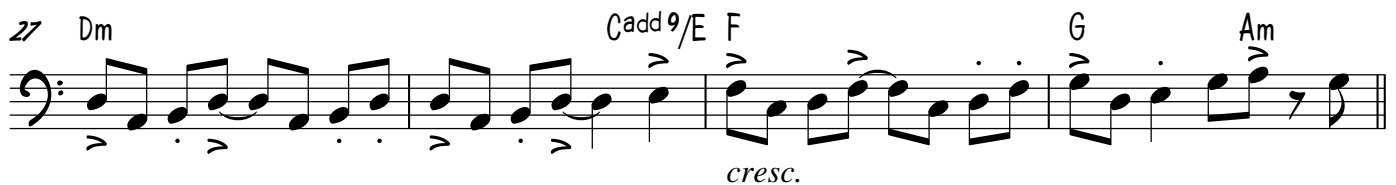
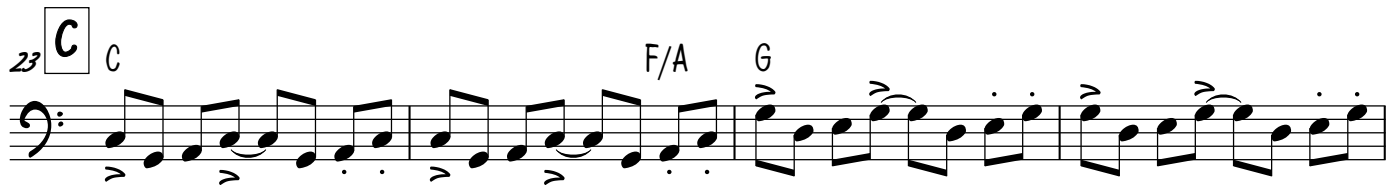
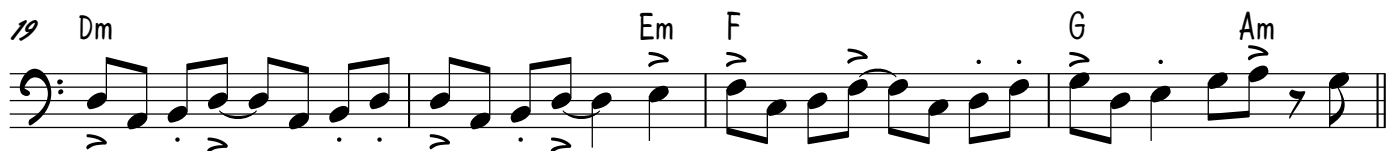
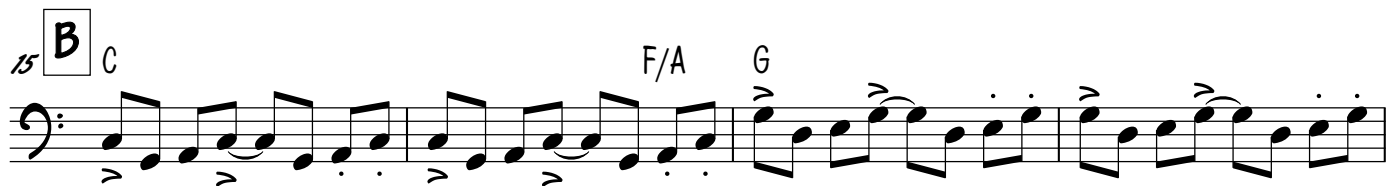
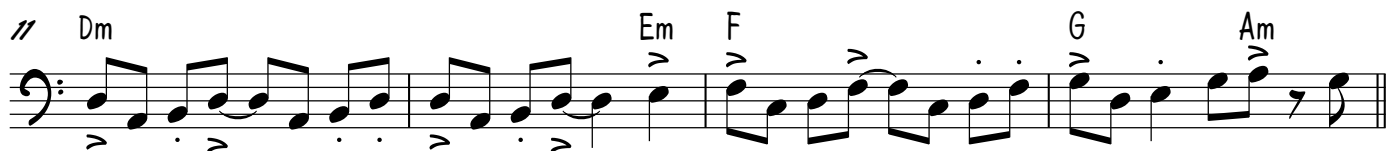
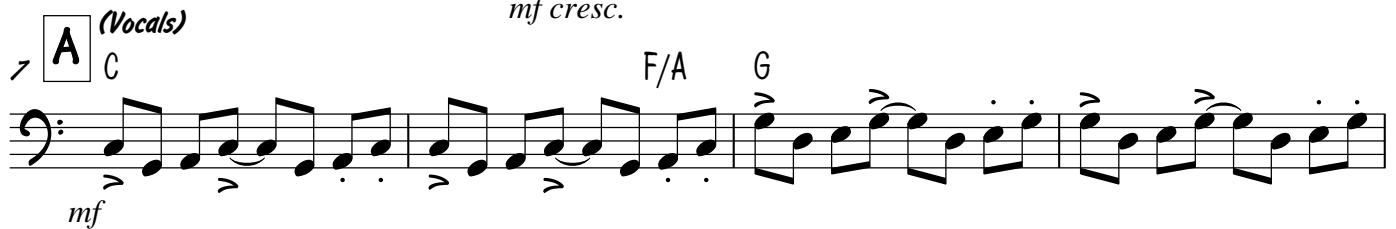
The Four Tops

♩ = 132 (Soul)

(Sugar Pie, Honey Bunch)



4



31 **D** (Sax Solo)
C F/A G
f

35 Dm Em F G Am

39 **E** C F/A G
mf

43 Dm Em F G Am

47 **F** C F/A G

51 Dm Em F G Am

55 **G** (C)
sub mp cresc.

58
mf cresc.

The image shows a bass line for the song 'I Can't Help Myself'. It consists of eight staves of music in bass clef. The first staff starts at measure 31 with a key signature change to D major (indicated by a 'D' in a box) and a '(Sax Solo)' annotation. The melody is a walking bass line with eighth and quarter notes. Chords C, F/A, and G are indicated above the staff. The second staff starts at measure 35 with chords Dm, Em, F, G, and Am. The third staff starts at measure 39 with a key signature change to E major (indicated by an 'E' in a box) and a 'mf' dynamic marking. It has chords C, F/A, and G. The fourth staff starts at measure 43 with chords Dm, Em, F, G, and Am. The fifth staff starts at measure 47 with a key signature change to F major (indicated by an 'F' in a box) and chords C, F/A, and G. The sixth staff starts at measure 51 with chords Dm, Em, F, G, and Am. The seventh staff starts at measure 55 with a key signature change to G major (indicated by a 'G' in a box) and a '(C)' annotation, with a 'sub mp cresc.' dynamic marking. The eighth staff starts at measure 58 with a 'mf cresc.' dynamic marking. The music ends with a double bar line at the end of the eighth staff.

61 **H** C F/A G

64 Dm Em F

68 1. G Am 2. G Am

70 **I** C F/A G

74 Dm Em

76 F G Am G C

cresc.

Piano

I Can't Help Myself

The Four Tops

♩ = 132 (Soul)

(Sugar Pie, Honey Bunch)

mp cresc.

Measures 1-3 of the piano introduction in 4/4 time. The melody in the right hand features eighth and sixteenth notes, while the left hand provides a steady bass line with eighth notes. The dynamic is marked *mp cresc.*

mf cresc.

Measures 4-6 of the piano introduction. The melody continues with more complex rhythmic patterns, including triplets. The dynamic is marked *mf cresc.*

A (Vocals)
C F/A G
mf sim...

Measures 7-10 of the vocal entry. The melody is marked *mf* and includes a *sim...* (sustained) instruction. Chords C, F/A, and G are indicated above the staff.

11 Dm Em F G Am

Measures 11-14 of the piano accompaniment. Chords Dm, Em, F, G, and Am are indicated above the staff.

15 **B** C F/A G

Measures 15-18 of the piano accompaniment. Chords C, F/A, and G are indicated above the staff.

19 Dm Em F G Am

Measures 19-22 of the piano accompaniment. Chords Dm, Em, F, G, and Am are indicated above the staff.

23 **C** C F/A G

27 Dm Cadd9/E F G Am

31 **D** (Sax Solo) C F/A G *cresc.*

35 Dm Em F G Am

39 **E** C F/A G *mf*

43 Dm Em F G Am

47 **F** C F/A G

51 Dm Em F G Am

55 **G** (C)

sub mp cresc.

58

mf cresc.

61 **H** C

F/A G Dm

f

66 Em F

1. G Am 2. G Am

70 **I** C

F/A G Dm

75 Em F G Am G C

cresc.